

NOVEMBER 9, 2020

BE IT REMEMBERED that the Board of Commissioners of Montgomery County, Tennessee, met in regular session, on Monday, November 9, 2020, at 6:00 P.M. Present and presiding, the Hon. Jim Durrett, County Mayor (Chairman). Also present, Kyle Johnson, Chief of Staff, Kellie Jackson, County Clerk, John Fuson*, Sheriff, Tim Harvey, County Attorney, Jeff Taylor, Director of Accounts and Budgets, and the following Commissioners:

Jerry Allbert	David Harper	Chris Rasnic
Joshua Beal	Garland Johnson	Rickey Ray
Loretta J. Bryant	Charles Keene	Larry Rocconi
Brandon Butts*	Jason D. Knight	Joe Smith
Carmelle Chandler	Rashidah A. Leverett*	Tangi C. Smith
Joe L. Creek	James R. Lewis*	Walker R. Woodruff
John M. Gannon	Lisa L. Prichard	

PRESENT: 20

ABSENT: Arnold Hodges (1)

When and where the following proceedings were had and entered of record,
to-wit:

*Present via Webex

PUBLIC ACCESS TO INFORMAL AND FORMAL NOVEMBER 2020 COUNTY COMMISSION MEETINGS

In accordance with the Governor's Executive Order regarding limiting gatherings to prevent the further spread of COVID-19, and allowing public meetings to be conducted by electronic means, the informal and formal November 2020 County Commission meetings will not be open to the public but can be viewed on the county website mcgtn.org via YouTube video. Limiting public access to these meetings is necessary to protect the public health, safety, and welfare in light of COVID-19.

If you have any questions, please contact Shelly Baggett at smbaggett@mcgtn.net, or by calling 931-648-5787.

BOARD OF COMMISSIONERS

AGENDA

NOVEMBER 9, 2020

CALL TO ORDER – Sheriff John Fuson

PLEDGE OF ALLEGIANCE – Commissioner Charlie Keene

INVOCATION – Chaplain Joe Creek

ROLL CALL

PRESENTATION

1. Proclamation for National School Psychology Week – Gena Albertia
2. Proclamation for County Voter Apathy Project – Tyler Rose
3. Parks Department 10 Year Anniversary Video – Jerry Allbert
4. CMCSS Update – Millard House

ZONING RESOLUTIONS

CZ-12-2020 Application of Mary B Bourne Rev Trust Richard Brian Bourne from AG to E-1
(deferred from October)

CZ-20-2020 Application of Huneycutt Properties L.P. Re4e Holdings LLC from AG to E-1

CZ-21-2020 Application of Donna & Roger Wallace from AG to R-1

CONSENT AGENDA

**All items in this portion of the agenda are considered to be routine and non-controversial by the County Commission and may be approved by one motion; however, a member of the County Commission may request that an item be removed for separate consideration.*

20-11-1* Resolution of the Montgomery County Board of Commissioners Approving Amendments to the 2020-21 CMCSS School Budget

20-11-2* Resolution to Accept a Donation of \$20,000 From the Clarksville Rotary Sunrise Club to Help with Projects and Other Related Items for the Wade Bourne Nature Center and to Name the Deck and Offer Limited Use to the Rotary Sunrise Club

- * Adoption of Commission Minutes dated October 12, 2020
- * Adoption of County Clerk's Report and Notary List
- * Adoption of County Mayor Nominations and Appointments

RESOLUTIONS

(required suspending rules)

- 20-11-3 Resolution of the Montgomery County Board of Commissioners Appropriating Phase I Design Funding for the Expansion of Rossview Road Near the Future Site of the Clarksville Montgomery County School System's Proposed New School Complex

UNFINISHED BUSINESS

- 20-10-10 **CORRECTIONS IN ACCOUNT NUMBERS FOR RESOLUTION APPROPRIATING FUNDS FOR THE PURPOSE OF EMPLOYING AN ADDITIONAL POSITION IN THE ASSESSOR'S OFFICE**

	<u>FROM</u>	<u>TO</u>	
Clerical Personnel*	101-54110-00000-52-51060	101-52300-00000-52-51620	\$ 36,062.00
Social Security	101-54110-00000-52-52010	101-52300-00000-52-52010	\$ 2,236.00
State Retirement	101-54110-00000-52-52040	101-52300-00000-52-52040	\$ 3,246.00
Life Insurance	101-54110-00000-52-52060	101-52300-00000-52-52060	\$ 36.00
Health Insurance	101-54110-00000-52-52070	101-52300-00000-52-52070	\$ 12,243.00
Medicare	101-54110-00000-52-52120	101-52300-00000-52-52120	\$ 523.00
Furniture & Fixtures	101-54110-00000-52-57110	101-52300-00000-52-57110	\$ 250.00
Communication Eqp	101-52600-00000-52-57080	101-52300-00000-52-57080	\$ 350.00
Data Processing Eqp	101-52600-00000-52-57090	101-52300-00000-52-57090	\$ 2,000.00
			<u>\$ 56,946.00</u>

*Please note that the Clerical Personnel line was originally Deputies under the Sheriff's Office department code.

REPORTS FILED

1. Building & Codes Monthly Report
2. Capital Projects Construction Update Report
3. **Drivers Safety Program Report – 3rd Quarter 2020**
4. **Accounts & Budgets Monthly Reports**
5. **Trustee's Monthly Reports**

ANNOUNCEMENTS

1. The Clarksville Montgomery County Christmas Parade is scheduled for Saturday, December 5th in downtown Clarksville. If you would like to ride the county float – let Shelly Baggett know.

ADJOURN

MONTGOMERY COUNTY GOVERNMENT



PROCLAMATION

By The County Mayor

National School Psychology Week

WHEREAS, *all children and youth learn best when they are healthy, supported, and receive an education that enables them to thrive academically, socially, and emotionally; and*

WHEREAS, *schools can more effectively ensure that all students are able to learn when they meet the needs of the whole child and provide integrated, multitiered support; and*

WHEREAS, *children's mental health is directly linked to their learning and development, and the learning environment provides an optimal context to promote good mental health through connectedness within the school and community; and*

WHEREAS, *sound psychological principles are integral to instruction and learning, social and emotional development, prevention, early intervention and school safety, and support of culturally diverse student populations; and*

WHEREAS, *school psychologists help children to thrive by nurturing their individual strengths across both personal and academic endeavors; and*

WHEREAS, *psychologists are skilled at assisting students in seeing possibilities and developing positive change to thrive in school and life. They help set goals, identify action steps, communicate needs, and engage in discussions to help create the connections necessary for students to develop critical academic and social emotional skills.*

NOW, THEREFORE, I, JIM DURRETT, Mayor of Montgomery County, do hereby proclaim November 9-13, 2020 as

National School Psychology Week

in Montgomery County, Tennessee and we recognize the vital role that school psychologists play in the development of our children. We honor all educators who support the growth and development of all children into flourishing individuals.


County Mayor

MONTGOMERY COUNTY GOVERNMENT



PROCLAMATION

By The County Mayor

WHEREAS, *Tyler Rose, a student at West Creek High School, although not yet old enough to vote, is passionate about governmental affairs and has a desire to run for political office some day; and*

WHEREAS, *Tyler's belief that one of the most important civic duties we have as citizens is to vote and elect individuals who represent what we believe; and*

WHEREAS, *Tyler's understanding about lower voter turnout in 2016 was inspired by reading an article in his advance placement government class about voter apathy; and*

WHEREAS, *Tyler was inspired to develop a website to provide voters with information, and he organized the Clarksville Montgomery County Voter Apathy Project where each Saturday he and fellow student volunteers would find a location around town to hand out voting information to citizens; and*

WHEREAS, *Tyler's project was sponsored by the Clarksville NAACP who helped supply guidance and support for the project; and*

WHEREAS, *Montgomery County voter turnout in this year's election was considerably higher than 2016 and we feel a part of that can be contributed to Tyler's project.*

NOW, THEREFORE, I, JIM DURRETT, Mayor of Montgomery County, Tennessee do hereby acknowledge and thank TYLER ROSE for recognizing the need and putting forth the effort to increase voter turnout during the November 2020 election in Montgomery County, Tennessee.


County Mayor

Mayor Durrett presented a Proclamation to Gena Albertia in recognition of National School Psychology Week.

Mayor Durrett presented a Proclamation to Tyler Rose in recognition of the Clarksville Montgomery County Voter Apathy Project.

A Parks Department 10 Year Anniversary Video was presented by Jerry Allbert.

Millard House presented a CMCSS update.

**RESOLUTION OF THE MONTGOMERY COUNTY BOARD OF
COMMISSIONERS
AMENDING THE ZONE CLASSIFICATION OF THE PROPERTY OF
MARY B BOURNE REV TRUST RICHARD BRIAN BOURNE**

WHEREAS, an application for a zone change from AG Agricultural District to E-1 Single-Family Estate District has been submitted by Mary B Bourne Rev Trust Richard Brian Bourne and

WHEREAS, said property is identified as County Tax Map 038, parcel 017.00, containing 230 acres, situated in Civil District 13, Property located on the northeast corner of the Guthrie Road and Rossview Road intersection.; and

WHEREAS, said property is described as follows:

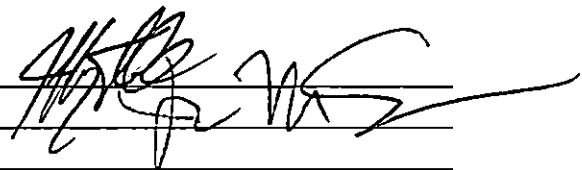
"SEE EXHIBIT A"

WHEREAS, the Planning Commission staff recommends DISAPPROVAL and the Regional Planning Commission recommends DISAPPROVAL of said application.

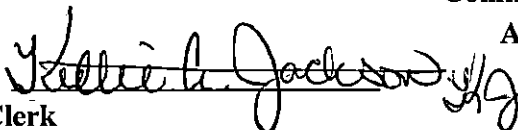
NOW, THEREFORE, BE IT RESOLVED by the Montgomery County Board of County Commissioners assembled in regular session on this 9th day of November, 2020, that the zone classification of the property of Mary B Bourne Rev Trust Richard Brian Bourne from AG to E-1 is hereby approved.

Duly passed and approved this 9th day of November, 2020.

Sponsor _____
Commissioner _____
Approved _____



County Mayor

Attested: 
County Clerk

"EXHIBIT A"

Tract 1: (Northside of Road)

Beginning at an existing iron pin in the north margin of State Route 237, also known as Rossvie Road, said iron pin being the southwest corner of the Phillip M. Rich, ET UX Property (Volume 1029, Page 2693); thence along margin of said road South 81 Degrees 24 Minutes 24 Seconds West 296.45 feet to a point; thence with a curve turning to the left with an arc length of 323.59 feet, with a radius of 2025.00 feet and with a chord of South 76 Degrees 49 Minutes 43 Seconds West 323.25 feet; thence South 72 Degrees 15 Minutes 03 Seconds West 274.27 feet to a point; thence with a curve turning to the right with an arc length of 100.87 feet, with a radius of 925.00 feet and with a chord of South 75 Degrees 22 Minutes 29 Seconds West 100.82 feet; thence North 12 Degrees 42 Minutes 56 Seconds East 1077.52 feet to a point; thence South 81 Degrees 29 Minutes 25 Seconds East 21.39 feet to a point; thence South 63 Degrees 07 Minutes 01 Seconds East 39.05 feet to a point; thence North 43 Degrees 16 Minutes 18 Seconds East 144.19 feet to a point; thence North 61 Degrees 37 Minutes 41 Seconds West 111.14 feet to a point; thence North 11 Degrees 16 Minutes 31 Seconds East 163.96 feet to a point;

thence North 81 Degrees 29 Minutes 25 Seconds West 463.62 feet to a point; thence South 11 Degrees 16 Minutes 31 Seconds West 450.52 feet to a point; thence South 81 Degrees 29 Minutes 25 Seconds East 380.71 feet to a point; thence South 12 Degrees 42 Minutes 56 Seconds West 951.91 feet to a point; thence South 82 Degrees 06 Minutes 37 Seconds West 629.03 feet to a point; thence with a curve turning to the left with an arc length of 67.87 feet, with a radius of 975.00 feet and with a chord of South 80 Degrees 06 Minutes 58 Seconds West 67.86 feet; thence with a reverse curve turning to the right with an arc length of 25.55 feet, with a radius of 25.00 feet and with a chord of North 72 Degrees 35 Minutes 50 Seconds West 24.45 feet; thence North 43 Degrees 18 Minutes 58 Seconds West 870.24 feet to a point; thence with a curve turning to the right with an arc length of 544.86 feet, with a radius of 1475.00 feet and with a chord of North 32 Degrees 44 Minutes 01 Seconds West 541.77 feet; thence North 22 Degrees 09 Minutes 04 Seconds West 133.49 feet to a point; thence with a curve turning to the left with an arc length of 160.14 feet, with a radius of 825.00 feet and with a chord of North 27 Degrees 42 Minutes 43 Seconds West 159.89 feet; thence South 82 Degrees 43 Minutes 18 Seconds East 217.64 feet to a point; thence North 07 Degrees 31 Minutes 38 Seconds East 174.01 feet to a point; thence South 81 Degrees 51 Minutes 20 Seconds East 977.83 feet to a point; thence North 08 Degrees 33 Minutes 15 Seconds East 1079.13 feet to a point; thence North 82 Degrees 40 Minutes 41 Seconds West 762.73 feet to a point; thence North 09 Degrees 24 Minutes 49 Seconds East 577.50 feet to a point; thence South 82 Degrees 21 Minutes 55 Seconds East 522.61 feet to a point; thence North 07 Degrees 56 Minutes 56 Seconds East 2085.29 feet to a point; thence South 82 Degrees 34 Minutes 46 Seconds East 1448.17 feet to a point; thence South 07 Degrees 40 Minutes 01 Seconds West 3274.10 feet to a point; thence South 72 Degrees 00 Minutes 58 Seconds East 1014.89 feet to a point; thence South 08 Degrees 00 Minutes 37 Seconds West 534.00 feet to a point; thence South 80 Degrees 10 Minutes 29 Seconds West 235.82 feet to a point; thence South 05 Degrees 55 Minutes 29 Seconds East 67.09 feet to a point; thence South 50 Degrees 17 Minutes 15 Seconds West 86.82 feet to a point; thence South 15 Degrees 51 Minutes 00 Seconds East 167.00 feet to a point; thence South 85 Degrees 13 Minutes 47 Seconds East 50.70 feet to a point; thence South 04 Degrees 50 Minutes 42 Seconds West 44.40 feet to a point; thence with a curve turning to the right with an arc length of 108.91 feet, with a radius of 1750.00 feet and with a chord of South 69 Degrees 38 Minutes 04 Seconds West 108.89 feet; thence North 20 Degrees 56 Minutes 17 Seconds West 430.26 feet to a point; thence North 72 Degrees 37

Minutes 27 Seconds West 191.42 feet to a point; thence South 02 Degrees 23 Minutes 47 Seconds West 326.07 feet to a point; thence South 00 Degrees 27 Minutes 25 Seconds West 213.23 feet to the point of beginning containing an area of 199.45 acres.

Tract 2: (Southside of Road)

Beginning at a new iron pin in the south margin of SR 237, also known as Rossvie Road, said iron pin also being the northwest corner of the Nancy Bourne Daves Property (Volume 317, Page 876); thence leaving margin of said road along the west line of said property South 05 Degrees 57 Minutes 03 Seconds East 491.27 feet to a new iron pin; thence North 82 Degrees 10 Minutes 03 Seconds West 573.27 feet to a new iron pin; thence North 00 Degrees 19 Minutes 51 Seconds East 279.04 feet to a new iron pin in the south margin of Rossvie Road; thence along margin of said road North 62 Degrees 32 Minutes 34 Seconds East 18.06 feet to a point; thence with a curve turning to the right with an arc length of 315.91 feet, with a radius of 925.00 feet and with a chord of North 72 Degrees 19 Minutes 35 Seconds East 314.37 feet to a point; thence North 82 Degrees 06 Minutes 37 Seconds East 201.73 feet to the point of beginning containing 5.00 Acres.

Tract 3: (Southside of Road)

Beginning at a new iron pin in the south margin of SR 237, also known as Rossvie Road, said iron pin also being the northeast corner of the Nancy Bourne Daves Property (Volume 317, Page 876); thence along margin of said road North 82 Degrees 06 Minutes 37 Seconds East 332.69 feet to a point; thence with a curve turning to the left with an arc length of 167.78 feet, with a radius of 975.00 feet and with a chord of North 77 Degrees 10 Minutes 50 Seconds East 167.57 feet to a point; thence North 72 Degrees 15 Minutes 03 Seconds East 274.27 feet to a point; thence with a curve turning to the right with an arc length of 315.60 feet, with a radius of 1975.00 feet and with a chord of North 76 Degrees 49 Minutes 43 Seconds East 315.27 feet to a point; thence North 81 Degrees 24 Minutes 24 Seconds East 252.98 feet to a new iron pin at the northwest corner of the Robert L. Langford, ET UX Property (Volume 1256, Page 730); thence leaving margin of said road South 07 Degrees 53 Minutes 55 Seconds West 953.85 feet to a point; thence North 82 Degrees 10 Minutes 03 Seconds West 849.15 feet to a point; thence North 12 Degrees 12 Minutes 57 Seconds East 139.62 feet to a point; thence North 84 Degrees 03 Minutes 03 Seconds West 214.05 feet to a point; thence North 21 Degrees 32 Minutes 03 Seconds West 423.93 feet to the point of beginning containing an area of 18.83 acres

On Motion to Adopt by Commissioner Rasnic, seconded by Commissioner Knight, the foregoing Resolution Failed by the following roll call vote:

District	Commissioner	Vote	District	Commissioner	Vote	District	Commissioner	Vote
1	John M. Gannon	N	8	Tangi C. Smith	N	15	David Harper	N
2	Charles Keene	N	9	Carmelle Chandler	N	16	Loretta J. Bryant	Y
3	Joe Smith	N	10	James R. Lewis	N	17	Chris Rasnic	N
4	Rickey Ray	N	11	Joe L. Creek	N	18	Jason D. Knight	Y
5	Rashidah A. Leverett	N	12	Lisa L. Prichard	N	19	Garland Johnson	N
6	Arnold Hodges	---	13	Walker R. Woodruff	N	20	Jerry Allbert	N
7	Brandon Butts	N	14	Joshua Beal	N	21	Larry Rocconi	N

Yeses – 2 Noes – 18 Abstentions – 0

ABSENT: Arnold Hodges (1)

**RESOLUTION OF THE MONTGOMERY COUNTY BOARD OF COMMISSIONERS
AMENDING THE ZONE CLASSIFICATION OF THE PROPERTY OF HUNEYCUTT PROPERTIES L. P. RE4E HOLDINGS LLC**

WHEREAS, an application for a zone change from AG Agricultural District to E-1 Single-Family Estate District has been submitted by Huneycutt Properties L. P. Re4e Holdings Llc and

WHEREAS, said property is identified as County Tax Map 148, parcel 061.00 (P), 062.00 , containing 1.00 acres, situated in Civil District 13, located Property fronting on the east frontage of SR 48, 180 +/- feet south of the SR 48 & Castleberry Hollow Rd. intersection.; and

WHEREAS, said property is described as follows:

Beginning at a fence post, said point being the western property line of the Edgar Ann Groves property as recorded in Vol. 1812, page 1928 ROMCT, said pin being S 18° 46' 20" E for a distance of 138 feet from the centerline intersection of Castleberry Hollow Road and State Route 48, said point also being the eastern right of way of State Route 48, said point also being the northwestern corner of the herein described parcel; Thence, leaving said State Route 48 right of way and along said Edgar Ann Groves property and the northern property line of the said Huneycutt Properties for the next 6 calls, S 86° 33' 21" E for a distance of 102.71 feet to a point on a line; Thence, S 86° 30' 02" E for a distance of 62.84 feet to a point on a line; Thence, S 85° 54' 20" E for a distance of 44.59 feet to a fence post (old), said point having the coordinates of Northing 736090.30 and an Easting of 1563281.08, said point also being the north east corner of the herein described parcel; Thence, S 05° 16' 15" E for a distance of 76.00 feet to a point on a line; Thence S 03° 16' 59" E a distance of 61.71 feet to a point on a line; Thence, S 04° 11' 19" E for a distance of 66.68 feet to a fence post (old) having the coordinates of Northing 735886.51 and Easting of 1563296.47; Thence, leaving said Edgar R. Groves and along a new zone line of the E4RE Holdings, LLC property as described in ORV 1904, page 2050, S 04° 11' 19" E for a distance of 5.10 feet to a point on a line, said point being the south east corner of the herein described parcel; Thence, continuing along a new zone line of the E4RE Holdings, LLC property N 83° 00' 31" W for a distance of 36.79 feet to a point on a line; Thence, continuing and the new zone line, N 87° 33' 41" W for a distance of 173.66 feet to a point on a line, said point being the eastern right of way of said State Route 48, said point also being the south west corner of the herein described parcel; Thence, along said State Route 48, N 04° 12' 33" W for a distance of 5.03 feet to a 1" axle having the coordinates of Northing 735898.31 and Easting of 1563086.46; Thence, continuing along said State Route 48, N 04° 12' 33" W for a distance of 205.73 feet to the point of beginning, said parcel containing 43,667 Square Feet or 1.00 Acres, more or less.

WHEREAS, the Planning Commission staff recommends APPROVAL and the Regional Planning Commission recommends APPROVAL of said application.

NOW, THEREFORE, BE IT RESOLVED by the Montgomery County Board of County Commissioners assembled in regular session on this 9th day of November, 2020, that the zone classification of the property of Huneycutt Properties L. P. Re4e Holdings Llc from AG to E-1 is hereby approved.

Duly passed and approved this 9th day of November, 2020.

Attested: Kellie Jackson
County Clerk

Sponsor _____
Commissioner _____
Approved [Signature]
County Mayor



On Motion to Adopt by Commissioner Rocconi, seconded by Commissioner Ray, the foregoing Resolution was Adopted by the following roll call vote:

District	Commissioner	Vote	District	Commissioner	Vote	District	Commissioner	Vote
1	John M. Gannon	Y	8	Tangi C. Smith	Y	15	David Harper	Y
2	Charles Keene	Y	9	Carmelle Chandler	Y	16	Loretta J. Bryant	Y
3	Joe Smith	Y	10	James R. Lewis	Y	17	Chris Rasnic	Y
4	Rickey Ray	Y	11	Joe L. Creek	Y	18	Jason D. Knight	Y
5	Rashidah A. Leverett	Y	12	Lisa L. Prichard	Y	19	Garland Johnson	Y
6	Arnold Hodges	---	13	Walker R. Woodruff	Y	20	Jerry Allbert	Y
7	Brandon Butts	Y	14	Joshua Beal	Y	21	Larry Rocconi	Y

Yeses – 20 Noes – 0 Abstentions – 0

ABSENT: Arnold Hodges (1)

**RESOLUTION OF THE MONTGOMERY COUNTY BOARD OF COMMISSIONERS
AMENDING THE ZONE CLASSIFICATION OF THE PROPERTY OF DONNA & ROGER WALLACE**

WHEREAS, an application for a zone change from AG Agricultural District to R-1 Single-Family Residential District has been submitted by Donna & Roger Wallace and

WHEREAS, said property is identified as County Tax Map 058, parcel 006.00 & 006.01, containing 318 acres, situated in Civil District 13, located Property fronting on the south frontage of Rossview Rd. south of the Rossview Rd. & Browning Way intersection & east of the eastern terminus of Collins View Way.; and

WHEREAS, said property is described as follows:
"SEE EXHIBIT A"

WHEREAS, the Planning Commission staff recommends APPROVAL and the Regional Planning Commission recommends APPROVAL of said application.

NOW, THEREFORE, BE IT RESOLVED by the Montgomery County Board of County Commissioners assembled in regular session on this 9th day of November, 2020, that the zone classification of the property of Donna & Roger Wallace from AG to R-1 is hereby approved.

Duly passed and approved this 9th day of November, 2020.

Sponsor _____
Commissioner _____
Approved _____

[Handwritten Signature]
[Handwritten Signature]
County Mayor

Attested: *[Handwritten Signature: Kelli A. Jackson]*
County Clerk



"EXHIBIT A"

Beginning an iron pin (old), said pin being the northwestern corner of the Kitty Seay Properties as recorded in Vol. 551, page 1659 ROMCT, said pin being N 81° 53' E for a distance of 629 feet from the centerline intersection of Browning Way and Fantasia Way, said point also being the southern right of way of Rossvie Road and the western property line of the Kitty Seay property, said point also being the north east corner of the herein described parcel; Thence, with said Kitty Seay property, S 10° 05' 45" W for a distance of 165.63 feet to a point on a line, said point being the western property line of the Debra Seay property as described in ORV 382, page 2287; Thence, leaving said Kitty Seay property and with said Debra Seay property, S 10° 05' 45" W for a distance of 175.55 feet to a point on a line, said point being the western property line of the Betty Phillips property as described in ORV 425, page 247; Thence, leaving said Kitty Seay property and with said Phillips property, S 10° 05' 44" W for a distance of 225.28 feet to a point on a line, said point being the western property line of the Meta Silvey Family Limited partnership property as described in ORV 1509, page 688; Thence, leaving said Phillips property and with said Meta Silvey Family Property for the next 4 calls, S 10° 05' 45" W for a distance of 240.16 feet to a point on a line; Thence, S 10° 05' 44" W for a distance of 234.20 feet to a point on a line; Thence, S 87° 09' 04" E for a distance of 529.33 feet to a point on a line; Thence, S 06° 22' 39" W for a distance of 2419.35 feet to a point on a line, said point being the northern line of the Red River; Thence, leaving said Meta Silvey Family Limited partnership property and along said Red River for the next 10 calls, S 50° 39' 51" W for a distance of 344.30 feet to a point on a line; Thence, S 16° 35' 54" W for a distance of 418.03 feet to a point on a line; Thence, S 07° 22' 51" E for a distance of 1196.06 feet to a point on a line; Thence, S 42° 23' 42" E for a distance of 236.60 feet to a point on a line; Thence, S 02° 34' 36" E for a distance of 1328.18 feet to a point on a line; Thence, S 23° 57' 13" W for a distance of 912.36 feet to a point on a line; Thence, S 52° 43' 28" W for a distance of 689.74 feet to a point on a line; Thence, S 74° 16' 12" W for a distance of 463.18 feet to a point on a line; Thence, S 88° 22' 39" W for a distance of 476.60 feet to a point on a line; Thence, N 83° 45' 23" W for a distance of 621.52 feet to a point on a line, said point being the eastern property line of the Moore Construction Inc. property as described in ORV 1561, page 339, said point also being the southwestern corner of the herein described parcel; Thence, with said Moore Construction property for the next 3 calls, N 07° 51' 43" E for a distance of 3254.40 feet to a point on a line; Thence, N 07° 51' 43" E for a distance of 310.59 feet to a point on a line; Thence, N 09° 51' 34" E for a distance of 568.23 feet to a point on a line, said point being the eastern property line of the Stones Manor HOA as described in Plat Book 'G' page 170; Thence, with said Stones Manor Subdivision lots 13-29; for the next 2 calls, N 10° 05' 07" E for a distance of 1027.22 feet to a point on a line; Thence, N 08° 32' 33" E for a distance of 1482.78 feet to a point on a line, said point being the southeastern corner of the Moore Construction Inc. property as described in ORV 1934, page 2110; Thence, leaving said Stones Manor Subdivision and along said Moore Construction Inc. property for the next 2 calls, N 08° 23' 01" E for a distance of 633.35 feet to a point on a line; Thence, N 08° 30' 22" E for a distance of 470.43 feet to a point on a line, said point being the southern right of way of Rossvie Road and the north west corner of the herein described parcel; Thence, with said Rossvie Road right of way for the next 4 calls, N 56° 42' 14" E for a distance of 24.24 feet to a point on a line; Thence, S 82° 22' 49" E for a distance of 172.35 feet to the beginning of a curve; Said curve turning to the left through an angle of 24° 25' 06", having a radius of 800.06 feet, and whose long chord bears N 85° 24' 35" E for a distance of 338.39 feet; Thence, N 73° 11' 59" E for a distance of 118.64 feet to a point on a line, said point being the north west corner of the Donna Wallace property as described in ORV 1895, Page 147; Thence, continuing with said Rossvie Road right of way and along said Donna Wallace property, N 73° 43' 53" E for a distance of 30.06 feet to a point on a line; Thence, leaving said Donna Wallace property and along with said Rossvie Road right of way for the

next 3 calls, N 72° 29' 58" E for a distance of 138.06 feet to the beginning of a non-tangential curve, Thence, on a curve turning to the left through an angle of 35° 25' 11", having a radius of 833.93 feet, and whose long chord bears N 55° 10' 27" E for a distance of 507.36 feet to a point on a line; Thence, N 41° 21' 08" E for a distance of 43.42 feet to the point of beginning, said parcel containing 13,876,794 Square Feet or 318.57 Acres, more or less.

COUNTY ZONING ACTIONS

The following case(s) will be considered for final action at the formal session of the Board of County Commissioners meeting on: **Monday, November 9, 2020**. The public hearing will be held on: **Monday, November 2, 2020**.

CASE NUMBER: CZ-20-2020

Applicant: Huneycutt Properties L. P. Re4e Holdings Llc .

Agent: Eric Huneycutt

Location: Property fronting on the east frontage of SR 48, 180 +/- feet south of the SR 48 & Castleberry Hollow Rd. intersection.

Request: AG Agricultural District . . to
E-1 Single-Family Estate District .

County Commission District: 4

STAFF RECOMMENDATION: APPROVAL

PLANNING COMMISSION RECOMMENDATION: APPROVAL

CASE NUMBER: CZ-21-2020

Applicant: Donna & Roger Wallace

Agent: Chris Blackwell

Location: Property fronting on the south frontage of Rossvie Rd. south of the Rossvie Rd. & Browning Way intersection & east of the eastern terminus of Collins View Way.

Request: AG Agricultural District to
R-1 Single-Family Residential District /

County Commission District: 19

STAFF RECOMMENDATION: APPROVAL

PLANNING COMMISSION RECOMMENDATION: APPROVAL

CLARKSVILLE-MONTGOMERY COUNTY REGIONAL PLANNING
STAFF REVIEW - ZONING

RPC MEETING DATE 10/28/2020

CASE NUMBER: CZ - 20 - 2020

NAME OF APPLICANT: Huneycutt Properties L. Re4e Holdings Llc

AGENT: Eric Huneycutt

GENERAL INFORMATION

TAX PLAT: 148

PARCEL(S): 061.00 (P),
062.00

ACREAGE TO BE REZONED: 1.00

PRESENT ZONING: AG

PROPOSED ZONING: E-1

EXTENSION OF ZONING

CLASSIFICATION: NO

PROPERTY LOCATION: Property fronting on the east frontage of SR 48, 180 +/- feet south of the SR 48 & Castleberry Hollow Rd. intersection.

CITY COUNCIL WARD: **COUNTY COMMISSION DISTRICT:** 4 **CIVIL DISTRICT:** 22

DESCRIPTION OF PROPERTY: An existing home site & a small sliver of the adjoining property.

APPLICANT'S STATEMENT To bring existing house into conformance.
FOR PROPOSED USE:

GROWTH PLAN AREA: RA **PLANNING AREA:** Cumberland

PREVIOUS ZONING HISTORY:

CLARKSVILLE-MONTGOMERY COUNTY REGIONAL PLANNING

STAFF REVIEW - ZONING

DEPARTMENT COMMENTS

- | | | |
|---|---|--|
| <input type="checkbox"/> GAS AND WATER ENG. SUPPORT MGR. | <input type="checkbox"/> ATT | <input checked="" type="checkbox"/> DIV. OF GROUND WATER |
| <input type="checkbox"/> GAS AND WATER ENG. SUPPORT COOR. | <input type="checkbox"/> FIRE DEPARTMENT | <input type="checkbox"/> HOUSING AUTHORITY |
| <input checked="" type="checkbox"/> UTILITY DISTRICT | <input checked="" type="checkbox"/> EMERGENCY MANAGEMENT | <input type="checkbox"/> INDUSTRIAL DEV BOARD |
| <input type="checkbox"/> CITY STREET DEPT. | <input type="checkbox"/> POLICE DEPARTMENT | <input type="checkbox"/> CHARTER COMM. |
| <input type="checkbox"/> TRAFFIC ENG. - ST. DEPT. | <input checked="" type="checkbox"/> SHERIFF'S DEPARTMENT | <input type="checkbox"/> Other... |
| <input checked="" type="checkbox"/> COUNTY HIGHWAY DEPT. | <input type="checkbox"/> CITY BUILDING DEPT. | |
| <input checked="" type="checkbox"/> CEMC | <input checked="" type="checkbox"/> COUNTY BUILDING DEPT. | |
| <input type="checkbox"/> DEPT. OF ELECTRICITY (CDE) | <input type="checkbox"/> SCHOOL SYSTEM OPERATIONS | |
| | <input type="checkbox"/> FT. CAMPBELL | |

1. CITY ENGINEER/UTILITY DISTRICT: Comments received from department and they had no concerns.

2. STREET DEPARTMENT/
COUNTY HIGHWAY DEPARTMENT: Comments received from department and they had no concerns.

3. DRAINAGE COMMENTS: Comments received from department and they had no concerns.

4. CDE/CEMC: No Comment(s) Received

5. FIRE DEPT/EMERGENCY MGT.: Comments received from department and they had no concerns.

6. POLICE DEPT/SHERIFF'S OFFICE: No Comment(s) Received

7. CITY BUILDING DEPARTMENT/
COUNTY BUILDING DEPARTMENT: Comments received from department and they had no concerns.

8. SCHOOL SYSTEM:

ELEMENTARY: MONTGOMERY

MIDDLE SCHOOL: MONTGOMERY

HIGH SCHOOL: MONTGOMERY

9. FT. CAMPBELL:

10. OTHER COMMENTS:

CLARKSVILLE-MONTGOMERY COUNTY REGIONAL PLANNING
STAFF REVIEW - ZONING

PLANNING STAFF'S STUDY AND RECOMMENDATION

IMPACT OF PROPOSED USE ON Minimal
SURROUNDING DEVELOPMENT:

INFRASTRUCTURE:

WATER SOURCE:

SEWER SOURCE: SEPTIC

STREET/ROAD ACCESSIBILITY: State Route 48

DRAINAGE COMMENTS:

RESIDENTIAL DEVELOPMENT

APPLICANT'S ESTIMATES HISTORICAL ESTIMATES

LOTS/UNITS:

1

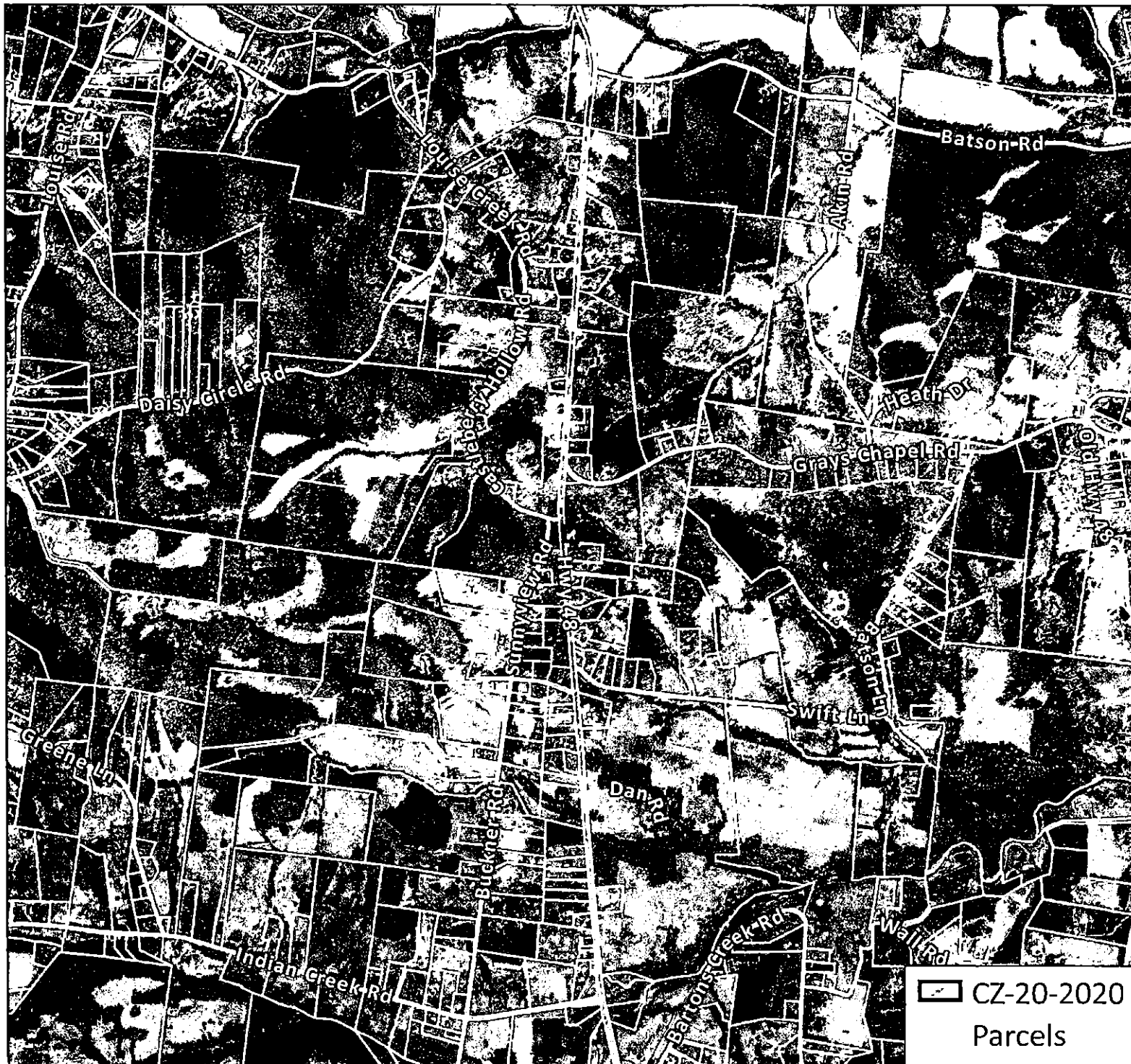
POPULATION:

APPLICABLE LAND USE PLAN

Cumberland

STAFF RECOMMENDATION: APPROVAL

1. The proposed zoning request is consistent with the adopted Land Use Plan.
2. The proposed request permits the primary property to be brought into compliance with the minimum lot size requirements for E-1 Estate District Zoning.
3. Adequate infrastructure serves the site & no adverse environmental issues were identified relative to this request.
- 4.
- 5.



CZ-20-2020

APPLICANT:

HUNEYCUTT
PROPERTIES, L.P. & E4RE
HOLDINGS LLC

REQUEST:

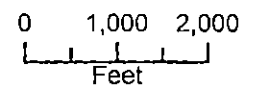
**AG
TO
E-1**


MAP & PARCEL

148 06100 (P)
148 06200

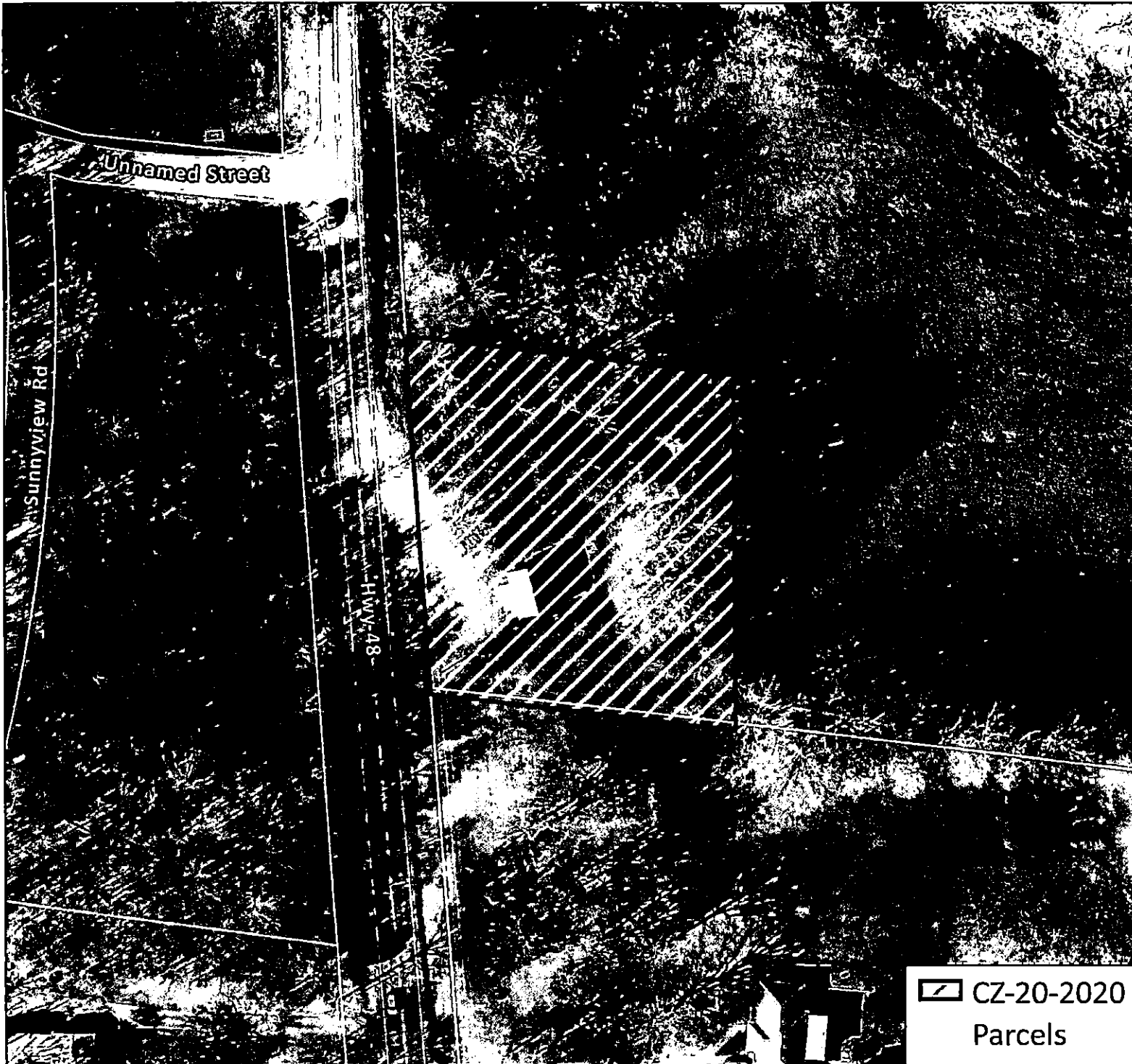
ACRES +/-
1

Scale: 1:24,000



 **CZ-20-2020**
Parcels

10/28/2020



CZ-20-2020

APPLICANT:

HUNEYCUTT
PROPERTIES, L.P. & E4RE
HOLDINGS LLC

REQUEST:

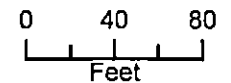
**AG
TO
E-1**


MAP & PARCEL

148 06100 (P)
148 06200

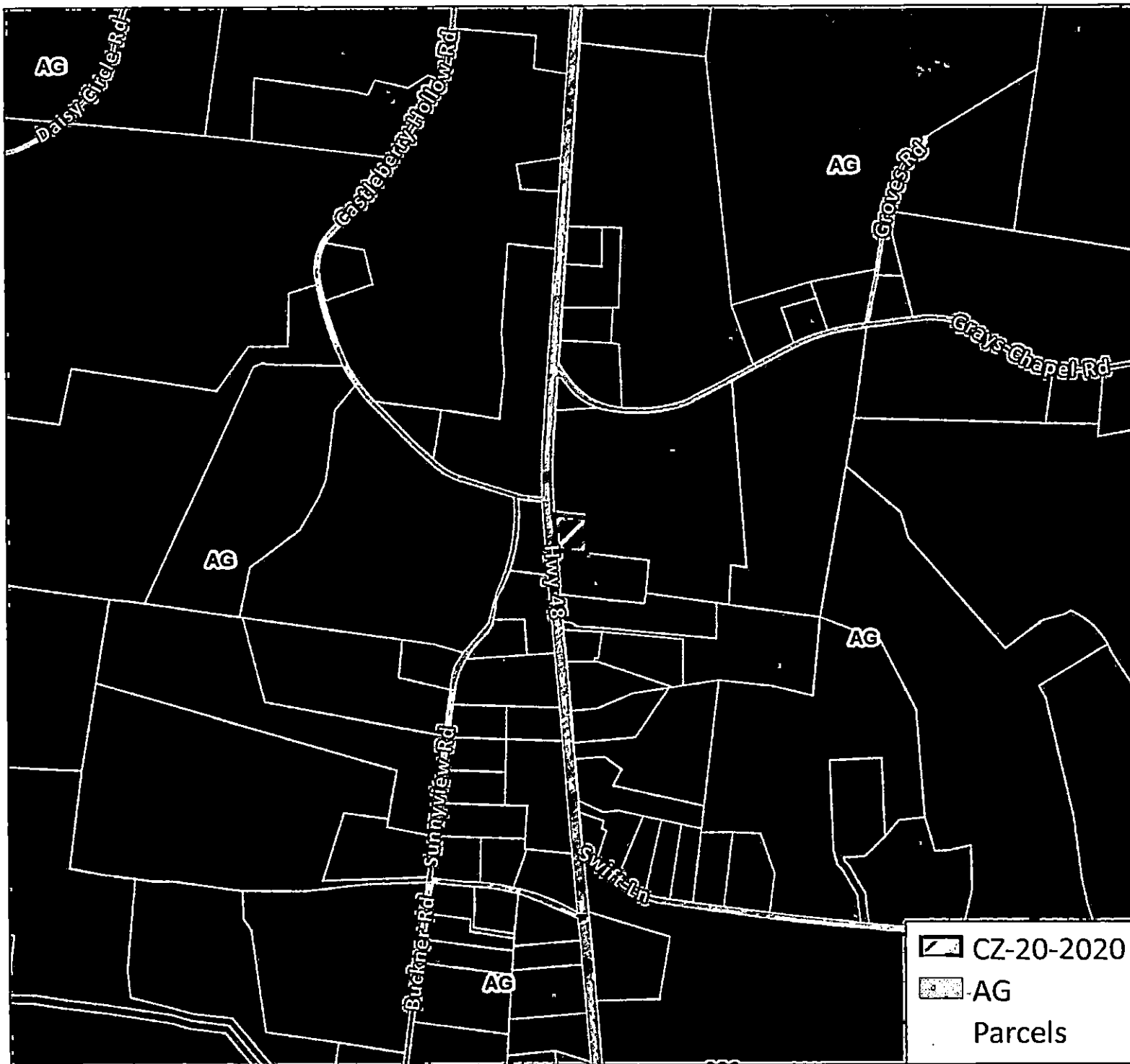
ACRES +/-
1

Scale: 1:1,000



 **CZ-20-2020
Parcels**

10/28/2020



CZ-20-2020

APPLICANT:

HUNEYCUTT
 PROPERTIES, L.P. & E4RE
 HOLDINGS LLC

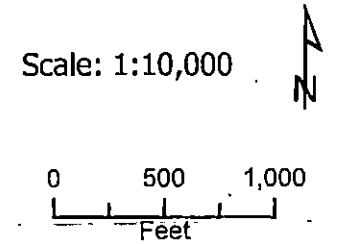
REQUEST:

**AG
 TO
 E-1**

MAP & PARCEL

148 06100 (P)
 148 06200

ACRES +/-
 1



10/28/2020

CASE NUMBER: CZ 20 2020 MEETING DATE 10/28/2020

APPLICANT: Huneycutt Properties L. P. Re4e Holdings Llc

PRESENT ZONING AG PROPOSED ZONING E-1

TAX PLAT # 148 PARCEL 061.00 (P), 062.00

GEN. LOCATION Property fronting on the east frontage of SR 48, 180 +/- feet south of the SR 48 & Castleberry Hollow Rd. intersection.

PUBLIC COMMENTS

None received as of 9:30 A.M. on 10/28/2020 (A.L.)

CLARKSVILLE-MONTGOMERY COUNTY REGIONAL PLANNING

STAFF REVIEW - ZONING

RPC MEETING DATE 10/28/2020

CASE NUMBER: CZ-21-2020

NAME OF APPLICANT:Donna & Roger

AGENT: Chris Blackwell

GENERAL INFORMATION

TAX PLAT: 058

PARCEL(S): 006.00 & 006.01

ACREAGE TO BE REZONED: 318

PRESENT ZONING: AG

PROPOSED ZONING: R-1

EXTENSION OF ZONING

CLASSIFICATION: YES TO THE NORTH & WEST.

PROPERTY LOCATION: Property fronting on the south frontage of Rossview Rd. south of the Rossview Rd. & Browning Way intersection & east of the eastern terminus of Collins View Way.

CITY COUNCIL WARD: **COUNTY COMMISSION DISTRICT:** 19 **CIVIL DISTRICT:** 1

DESCRIPTION OF PROPERTY: Rolling hills currently being used for row crops. Areas with treelines & multiple sinkholes onsite.

APPLICANT'S STATEMENT FOR PROPOSED USE: To allow for single family development.

GROWTH PLAN AREA: UGB **PLANNING AREA:** Rossview Planning Area

PREVIOUS ZONING HISTORY: CZ-8-2020

CLARKSVILLE-MONTGOMERY COUNTY REGIONAL PLANNING

STAFF REVIEW - ZONING

DEPARTMENT COMMENTS

- | | | |
|--|--|---|
| <input checked="" type="checkbox"/> GAS AND WATER ENG. SUPPORT MGR. | <input type="checkbox"/> ATT | <input type="checkbox"/> DIV. OF GROUND WATER |
| <input checked="" type="checkbox"/> GAS AND WATER ENG. SUPPORT COOR. | <input type="checkbox"/> FIRE DEPARTMENT | <input type="checkbox"/> HOUSING AUTHORITY |
| <input type="checkbox"/> UTILITY DISTRICT | <input checked="" type="checkbox"/> EMERGENCY MANAGEMENT | <input type="checkbox"/> INDUSTRIAL DEV BOARD |
| <input type="checkbox"/> CITY STREET DEPT. | <input type="checkbox"/> POLICE DEPARTMENT | <input type="checkbox"/> CHARTER COMM. |
| <input type="checkbox"/> TRAFFIC ENG. - ST. DEPT. | <input checked="" type="checkbox"/> SHERIFF'S DEPARTMENT | <input type="checkbox"/> Other... |
| <input checked="" type="checkbox"/> COUNTY HIGHWAY DEPT. | <input type="checkbox"/> CITY BUILDING DEPT. | |
| <input checked="" type="checkbox"/> CEMC | <input checked="" type="checkbox"/> COUNTY BUILDING DEPT. | |
| <input type="checkbox"/> DEPT. OF ELECTRICITY (CDE) | <input checked="" type="checkbox"/> SCHOOL SYSTEM OPERATIONS | |
| | <input type="checkbox"/> FT. CAMPBELL | |

1. CITY ENGINEER/UTILITY DISTRICT: Clks. G & W. May require water & sewer system upgrades.
2. STREET DEPARTMENT/
COUNTY HIGHWAY DEPARTMENT: County Highway Dept. Traffic Assessment Required.
3. DRAINAGE COMMENTS: Comments received from department and they had no concerns.
4. CDE/CEMC: No Comment(s) Received
5. FIRE DEPT/EMERGENCY MGT.: Comments received from department and they had no concerns.
6. POLICE DEPT/SHERIFF'S OFFICE: No Comment(s) Received
7. CITY BUILDING DEPARTMENT/
COUNTY BUILDING DEPARTMENT: Comments received from department and they had no concerns.
8. SCHOOL SYSTEM: Rossview Elem., Rossview Middle & Rossview High are in the 2nd fastest growing region in Mont. County. Rossview Elem. is at 124% capacity and currently has 11 portable classrooms, Rossview Middle is at 117% capacity and currently has 11 portable classrooms, Rossview High is at 110% capacity and currently has 6 portables. CMCSS has not constructed a school since 2015 in this region. There are over 1,000 lots already approved in this region. This continued student growth necessitates additional action to address building capacity growth and school bus transportation needs in Mont. County. This development could contribute add additional students & require additional infrastructure & funding. If a new middle school can be approved by August 2022, the capacity at the middles schools could possibly be reduced by 10% to 20%, after a comprehensive county rezoning. In addition, Rossview road transitions from 5 to 2 lanes at the Rossview Campus, and traffic volume will only increase.
- | | |
|----------------|-----------------|
| ELEMENTARY: | <u>ROSSVIEW</u> |
| MIDDLE SCHOOL: | <u>ROSSVIEW</u> |
| HIGH SCHOOL: | <u>ROSSVIEW</u> |
9. FT. CAMPBELL:
10. OTHER COMMENTS:

CLARKSVILLE-MONTGOMERY COUNTY REGIONAL PLANNING
STAFF REVIEW - ZONING

PLANNING STAFF'S STUDY AND RECOMMENDATION

IMPACT OF PROPOSED USE ON SURROUNDING DEVELOPMENT: Increased single family residential density.

INFRASTRUCTURE:

WATER SOURCE: CITY

SEWER SOURCE: CITY

STREET/ROAD ACCESSIBILITY: Rossview Road & Collins View Way (Stones Manor Sub.)

DRAINAGE COMMENTS: Topo varies greatly. There are multiple sink holes onsite & Approximately 200+/- acres of land is encumbered due to steep topography, flood plain & easement.

RESIDENTIAL DEVELOPMENT

APPLICANT'S ESTIMATES HISTORICAL ESTIMATES

LOTS/UNITS:	286	613 / 307
POPULATION:		828
		200 +/- acres
		are encumbered
		w/ steep topo

APPLICABLE LAND USE PLAN

Rossview Road Planning Area - One of the most diversified areas of the county in terms of land use. It has the best remaining agricultural land. One of the fastest growing sectors of Montgomery County. Factors affecting growth all average to above average. The Industrial Park is also located in this planning area.

STAFF RECOMMENDATION: APPROVAL

1. The proposed zoning request is consistent with the adopted Land Use Plan.
2. The proposed R-1 Single Family Residential District is the appropriate zoning classification for the area & is an extension of the R-1 zoning classification to the north & west.
3. Adequate infrastructure serves the site & no adverse environmental issues were identified relative to this request.
4. A traffic assessment was submitted with an acceptable Level of Service & site distance for the entrance at Rossview Road. During the construction stage of this development reservation of future right of way and construction of a turn lane at its entrance will be required.
- 5.



CZ-21-2020

APPLICANT:

DONNA & ROGER
WALLACE

REQUEST:

**AG
TO
R-1**

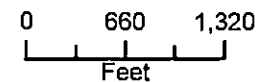
MAP & PARCEL

058 00600
058 00601

ACRES +/-

318

Scale: 1:14,000



**CZ-21-2020
Parcels**

10/28/2020



CZ-21-2020

APPLICANT:

DONNA & ROGER
WALLACE

REQUEST:

**AG
TO
R-1**

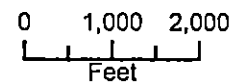
MAP & PARCEL

058 00600
058 00601

ACRES +/-

318

Scale: 1:24,000



**▨ CZ-21-2020
Parcels**

10/28/2020



CZ-21-2020

APPLICANT:

DONNA & ROGER
WALLACE

REQUEST:

**AG
TO
R-1**

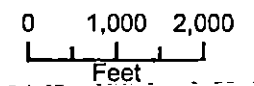
MAP & PARCEL

058 00600
058 00601

ACRES +/-

318

Scale: 1:24,000



10/28/2020

CASE NUMBER: CZ 21 2020 MEETING DATE 10/28/2020

APPLICANT: Donna & Roger Wallace

PRESENT ZONING AG

PROPOSED ZONING R-1

TAX PLAT # 058

PARCEL 006.00 & 006.01

GEN. LOCATION Property fronting on the south frontage of Rossvie Rd. south of the Rossvie Rd.
& Browning Way intersection & east of the eastern terminus of Collins View Way.

PUBLIC COMMENTS

A copy of email is in the file.



City
of
Clarksville

John Spainhoward <john.spainhoward@cityofclarksville.com>

Comments relative to ~~Case CZ 21 2020~~ for submittal Oct 28 meeting

1 message

Todd Trapnell <ttrapnell10@gmail.com>

Fri, Oct 23, 2020 at 8:19 AM

To: John Spainhoward <john.spainhoward@cityofclarksville.com>

Dear Regional Planning Commission:

I received notice that this matter relative to Donna and Roger Wallace and rezoning across from Farmington has resurfaced, despite the fact by rule it was to be tabled for another year per my understanding. Very discouraging that this has been allowed to resurface much ahead of the original timing. Concerning that the process and participants have allowed this.

I moved here in 2019 and am highly concerned as my property backs up to Rossview Road. A neighborhood in what is a beautiful farm and field now, is disconcerting. These homes in Farmington are what I would consider costly, and a widened road, crowded with another neighborhood across the street, will affect the property values. Consider to, depending the value of the homes in that proposed development, that this would cause a negative impact on what is a beautiful subdivision of Farmington at this time, not to mention the impact on Stone Manor as well.

I respectfully ask you to consider the impacts you are making by voting to allow this to move forward. Please allow the process to wait as it was initially voted on only a few short months ago. Why this has changed or been modified is concerning and I'd request you to deeply reconsider your vote and position.

Thank you kindly for your time.

Todd Trapnell
284 Browning Court

On Motion to Adopt by Commissioner Knight, seconded by Commissioner Gannon, the

foregoing Resolution was Adopted by the following roll call vote:

District	Commissioner	Vote	District	Commissioner	Vote	District	Commissioner	Vote
1	John M. Gannon	Y	8	Tangi C. Smith	Y	15	David Harper	Y
2	Charles Keene	Y	9	Carmelle Chandler	Y	16	Loretta J. Bryant	Y
3	Joe Smith	Y	10	James R. Lewis	Y	17	Chris Rasnic	Y
4	Rickey Ray	Y	11	Joe L. Creek	Y	18	Jason D. Knight	Y
5	Rashidah A. Leverett	N	12	Lisa L. Prichard	Y	19	Garland Johnson	N
6	Arnold Hodges	---	13	Walker R. Woodruff	N	20	Jerry Albert	N
7	Brandon Butts	Y	14	Joshua Beal	N	21	Larry Rocconi	A

Yeses – 14 Noes – 5 Abstentions – 1

ABSENT: Arnold Hodges (1)

RESOLUTION OF THE MONTGOMERY COUNTY
BOARD OF COMMISSIONERS APPROVING
AMENDMENTS TO THE 2020-21
SCHOOL BUDGET

WHEREAS, the proposed amendments to the General Purpose School Fund reflect the most recent estimates of revenues and expenditures, and,

WHEREAS, the Clarksville-Montgomery County Board of Education has studied the attached amendments and approved them on October 20, 2020, for recommendation to the Montgomery County Board of Commissioners.

NOW, THEREFORE, BE IT RESOLVED by the Montgomery County Board of County Commissioners assembled in Regular Business Session on this 9th day of November, 2020, that the 2020-21 School Budget be amended as per the attached schedules.

Sponsor *Mark Z. H. I.*

Commissioner *J. J. Ault*

Approved *J. D. ...*
County Mayor

Attested *Kellie A. Jackson*
County Clerk



**Clarksville-Montgomery County School System
General Purpose School Fund Budget**

	2020-21 Original Budget	Current Amended Budget	Proposed Increase (Decrease)	Proposed Amended Budget
--	-------------------------------	------------------------------	------------------------------------	-------------------------------

Estimated Revenues

Local Revenues

Current Property Tax	28,002,813	28,002,813	-	28,002,813	
Trustees Collection - Prior Years	500,000	500,000	-	500,000	
Trustees Collection - Bankruptcy	10,000	10,000	-	10,000	
Cir. Clk/Clk Mastr Coll	316,245	316,245	-	316,245	
Interest & Penalties	200,000	200,000	-	200,000	
Payments In Lieu of Taxes (Utility)	577,493	577,493	-	577,493	
Local Option Sales Tax	59,120,695	60,778,378	-	60,778,378	
Wheel Tax	5,151,000	5,151,000	-	5,151,000	
Business Tax	800,000	800,000	-	800,000	
Mixed Drink Tax	400,000	400,000	-	400,000	
Bank Excise Tax	161,000	161,000	-	161,000	
Archives & Records Management Fee	7,800	7,800	-	7,800	
Tuition - Other	98,000	98,000	-	98,000	
School Based Health Program	62,900	62,900	-	62,900	
Criminal Background Fee	36,300	36,300	-	36,300	
Other charges for services	330,000	330,000	-	330,000	
Lease/Rentals	138,000	138,000	-	138,000	
E-Rate Funding	295,947	295,947	-	295,947	
Misc. Refund - Other	52,000	52,000	-	52,000	
Sale of Equipment	500,000	500,000	1,700,000	2,200,000	Sale of equipment on Gov Deals
Damages from Individuals	3,435	3,435	-	3,435	
Contributions & Gifts	26,200	26,200	-	26,200	
Other Local Revenue	6,000	6,000	-	6,000	
Total Local Revenues	96,795,828	98,453,511	1,700,000	100,153,511	

Clarksville-Montgomery County School System General Purpose School Fund Budget

	2020-21 Original Budget	Current Amended Budget	Proposed Increase (Decrease)	Proposed Amended Budget
State Revenues				
Basic Education Program	191,536,360	189,477,360	-	189,477,360
Early Childhood Education	1,840,910	1,840,910	-	1,840,910
Career Ladder Program	307,300	307,300	-	307,300
Income Tax	175,000	175,000	-	175,000
Total State Revenues	193,859,570	191,800,570	-	191,800,570
Federal Revenues				
Public Law 874 (Impact Aid)	1,790,633	1,790,633	-	1,790,633
JROTC	693,600	693,600	-	693,600
Contributions	22,000	22,000	-	22,000
Adult Literacy	31,494	31,494	-	31,494
Total Federal Revenues	2,537,727	2,537,727	-	2,537,727
Non-Revenue Sources				
Capital Lease Proceeds	3,796,350	3,796,350	-	3,796,350
Insurance Recovery	1,000	1,000	-	1,000
Operating Transfers	1,118,406	1,118,406	-	1,118,406
Total Non-Revenue Sources	4,915,756	4,915,756	-	4,915,756
Total Revenues	298,108,881	297,707,564	1,700,000	299,407,564

Clarksville-Montgomery County School System General Purpose School Fund Budget

	2020-21 Original Budget	Current Amended Budget	Proposed Increase (Decrease)	Proposed Amended Budget
--	-------------------------------	------------------------------	------------------------------------	-------------------------------

Beginning Reserves and Fund Balance

Reserve for On-The-Job Injury	402,218	402,218	-	402,218
Reserve for Property & Liability Insurance	781,000	781,000	-	781,000
Reserve for BEP	-	-	-	-
Reserve for Career Ladder	61,967	(826)	-	-826
Assign for Education - Munis Systems	-	0	0	0
Assign for Education - School Bus Replacements	1,609,500	1,609,500	-	1,609,500
Assign for Technology	1,033,000	1,033,000	-	1,033,000
Equipment, Purchases and Leases				
Assign for Education - TCRS	-	-	-	-

Total Reserves	3,887,685	3,824,892	-	3,824,892
-----------------------	------------------	------------------	----------	------------------

Beginning Fund Balance	20,086,347	26,752,244	-	26,752,244
-------------------------------	-------------------	-------------------	----------	-------------------

Actual Fund Balance as of 6/30/20

Total Reserves and Fund Balance	23,974,032	30,577,136	-	30,577,136
--	-------------------	-------------------	----------	-------------------

Total Available Funds	322,082,913	328,284,700	1,700,000	329,984,700
------------------------------	--------------------	--------------------	------------------	--------------------

**Clarksville-Montgomery County School System
General Purpose School Fund Budget**

	2020-21 Original Budget	Current Amended Budget	Proposed Increase (Decrease)	Proposed Amended Budget
--	-------------------------------	------------------------------	------------------------------------	-------------------------------

Expenditures (Appropriations)

71100 - Regular Instruction

Salaries	102,859,120	102,859,120	146,938	103,006,058	Sub Increase, Virt supp to 72210, Homebound from 71200
Employee Benefits	36,534,572	36,534,572	(9,820)	36,524,752	Associated benefits
Contracted Services	1,649,694	1,649,694	(4,000)	1,645,694	Homebound travel
Supplies and Materials	5,571,950	5,571,950	-	5,571,950	
Equipment	59,000	59,000	-	59,000	
Student Fee Waivers	25,582	25,582	-	25,582	

Total 71100 - Regular Instruction	146,699,918	146,699,918	133,118	146,833,036
--	--------------------	--------------------	----------------	--------------------

71150 - Alternative School

Salaries	885,468	885,468	-	885,468
Employee Benefits	356,150	356,150	-	356,150
Contracted Services	4,600	4,600	-	4,600
Supplies and Materials	3,000	3,000	-	3,000

Total 71150 - Alternative School	1,249,218	1,249,218	-	1,249,218
---	------------------	------------------	----------	------------------

71200 - Special Education

Salaries	26,927,138	26,927,138	40,857	26,967,995	Substitute Increase, Homebound to 71100
Employee Benefits	9,911,030	9,911,030	(19,094)	9,891,936	Associated benefits
Contracted Services	153,000	335,705	4,000	339,705	Homebound travel
Supplies and Materials	85,000	143,941	-	143,941	
Equipment	10,000	10,000	-	10,000	

Total 71200 - Special Education	37,086,168	37,327,814	25,763	37,353,577
--	-------------------	-------------------	---------------	-------------------

Clarksville-Montgomery County School System
General Purpose School Fund Budget

	2020-21 Original Budget	Current Amended Budget	Proposed Increase (Decrease)	Proposed Amended Budget	
71300 - Vocational Education					
Salaries	4,377,161	4,377,161	-	4,377,161	
Employee Benefits	1,536,512	1,536,512	-	1,536,512	
Contracted Services	9,400	9,400	(2,900)	6,500	Move to supplies
Supplies and Materials	508,855	508,855	2,900	511,755	From Contracted Services
Equipment	140,000	140,000	-	140,000	
Total 71300 - Vocational Education	6,571,928	6,571,928	-	6,571,928	
72110 - Student Services					
Salaries	691,241	691,241	-	691,241	
Employee Benefits	215,074	215,074	-	215,074	
Contracted Services	7,360	7,360	-	7,360	
Supplies and Materials	10,400	10,400	-	10,400	
Staff Development	7,000	7,000	-	7,000	
Total 72110 - Student Services	931,075	931,075	-	931,075	
72120 - Health Services					
Salaries	1,469,879	1,469,879	-	1,469,879	
Employee Benefits	579,833	579,833	-	579,833	
Contracted Services	1,200	1,200	-	1,200	
Supplies and Materials	33,795	33,795	-	33,795	
Equipment	29,150	29,150	-	29,150	
Total 72120 - Health Services	2,113,857	2,113,857	-	2,113,857	

**Clarksville-Montgomery County School System
General Purpose School Fund Budget**

	2020-21 Original Budget	Current Amended Budget	Proposed Increase (Decrease)	Proposed Amended Budget
--	-------------------------------	------------------------------	------------------------------------	-------------------------------

72130 - Other Student Support

Salaries	8,464,554	8,464,554	-	8,464,554
Employee Benefits	2,767,107	2,767,107	-	2,767,107
Contracted Services	462,443	554,243	-	554,243
Supplies and Materials	6,200	6,200	-	6,200
Staff Development	10,000	10,000	-	10,000
Other	1,200	1,200	-	1,200

Total 72130 - Other Student Support	11,711,504	11,803,304	-	11,803,304
--	-------------------	-------------------	----------	-------------------

72210 - Regular Instruction Support

Salaries	10,599,143	10,434,143	247,615	10,681,758	
Employee Benefits	3,660,124	3,660,124	85,175	3,745,299	Virtual suppt from 71100, tech desktop suppt positions Associated benefits
Contracted Services	450,520	450,520	-	450,520	
Supplies and Materials	1,086,556	1,086,556	-	1,086,556	
Equipment	5,000	5,000	-	5,000	
Staff Development	897,472	897,472	7,200	904,672	Diversity & Inclusion Prof Development
Other	21,000	21,000	-	21,000	

Total 72210 - Regular Instruction Support	16,719,815	16,554,815	339,990	16,894,805	
--	-------------------	-------------------	----------------	-------------------	--

72215 - Alternative School Support

Salaries	23,408	23,408	-	23,408
Employee Benefits	5,079	5,079	-	5,079

Total 72215 - Alternative School Support	28,487	28,487	-	28,487
---	---------------	---------------	----------	---------------

**Clarksville-Montgomery County School System
General Purpose School Fund Budget**

	2020-21 Original Budget	Current Amended Budget	Proposed Increase (Decrease)	Proposed Amended Budget
--	-------------------------------	------------------------------	------------------------------------	-------------------------------

72220 - Special Education Support

Salaries	2,072,650	2,072,650	-	2,072,650
Employee Benefits	684,286	684,286	-	684,286
Contracted Services	179,800	197,854	-	197,854
Supplies and Materials	180,301	230,301	-	230,301
Staff Development	20,500	20,500	-	20,500

Total 72220 - Special Education Support	3,137,537	3,205,591	-	3,205,591
--	------------------	------------------	----------	------------------

72230 - Vocational Education Support

Salaries	128,083	128,083	-	128,083
Employee Benefits	23,735	23,735	-	23,735
Supplies and Materials	600	600	-	600
Staff Development	2,000	2,000	-	2,000

Total 72230 - Vocational Education Support	154,418	154,418	-	154,418
---	----------------	----------------	----------	----------------

72250 - Technology

Salaries	1,271,934	1,271,934	120,849	1,392,783
Employee Benefits	407,112	407,112	31,685	438,797
Contracted Services	1,672,865	2,152,865	-	2,152,865
Supplies and Materials	3,213,377	3,213,377	-	3,213,377
Equipment	5,031,350	5,031,350	-	5,031,350
Staff Development	34,460	34,460	-	34,460

Programmer, Report Analyst, Repair Tech
Associated benefits

Total 72250 - Technology	11,631,098	12,111,098	152,534	12,263,632
---------------------------------	-------------------	-------------------	----------------	-------------------

72260 - Adult Education Support

Salaries	248,381	248,381	-	248,381
Employee Benefits	61,353	61,353	-	61,353

Total 72260 - Adult Education Support	309,734	309,734	-	309,734
--	----------------	----------------	----------	----------------

**Clarksville-Montgomery County School System
General Purpose School Fund Budget**

	2020-21 Original Budget	Current Amended Budget	Proposed Increase (Decrease)	Proposed Amended Budget	
--	-------------------------------	------------------------------	------------------------------------	-------------------------------	--

72310 - Board of Education

Salaries	70,722	70,722	-	70,722	
Employee Benefits	1,343,700	1,343,700	50,000	1,393,700	Unemployment
Contracted Services	298,300	298,300	-	298,300	
Insurance Premiums	1,106,287	1,089,047	-	1,089,047	
Trustee's Commission	1,301,705	1,301,705	-	1,301,705	
Staff Development	19,500	19,500	-	19,500	
Background Investigations/Prof. Dev.	95,000	95,000	-	95,000	
Community Relations	500	500	-	500	

Total 72310 - Board of Education	4,235,714	4,218,474	50,000	4,268,474	
---	------------------	------------------	---------------	------------------	--

72320 - Director of Schools

Salaries	597,226	597,226	-	597,226	
Employee Benefits	168,488	168,488	-	168,488	
Contracted Services	72,540	72,540	-	72,540	
Supplies and Materials	3,650	3,650	-	3,650	
Equipment	1,500	1,500	-	1,500	
Staff Development	21,250	21,250	-	21,250	

Total 72320 - Director of Schools	864,654	864,654	-	864,654	
--	----------------	----------------	----------	----------------	--

72320 - Printing and Communications

Salaries	560,830	560,830	-	560,830	
Employee Benefits	228,707	228,707	-	228,707	
Contracted Services	74,650	74,650	-	74,650	
Supplies and Materials	60,776	60,776	-	60,776	
Equipment	26,820	26,820	-	26,820	
Staff Development	27,982	27,982	-	27,982	

Total 72320 - Printing and Communications	979,765	979,765	-	979,765	
--	----------------	----------------	----------	----------------	--

Clarksville-Montgomery County School System General Purpose School Fund Budget

	2020-21 Original Budget	Current Amended Budget	Proposed Increase (Decrease)	Proposed Amended Budget
--	-------------------------------	------------------------------	------------------------------------	-------------------------------

72410 - Office of the Principal

Salaries	14,857,964	14,857,964	-	14,857,964
Employee Benefits	5,849,578	5,849,578	-	5,849,578
Contracted Services	30,200	30,200	-	30,200
Equipment	25,000	25,000	-	25,000
Staff Development	39,000	39,000	-	39,000

Total 72410 - Office of the Principal	20,801,742	20,801,742	-	20,801,742
--	-------------------	-------------------	----------	-------------------

72510 - Business Affairs

Salaries	1,893,436	1,893,436	-	1,893,436
Employee Benefits	742,857	742,857	-	742,857
Contracted Services	73,699	73,699	125,550	199,249
Supplies and Materials	20,180	20,180	-	20,180
Equipment	5,800	5,800	-	5,800
Staff Development	16,619	16,619	-	16,619

Gov Deals Fees, Uniform laundry from 72610

Total 72510 - Business Affairs	2,752,591	2,752,591	125,550	2,878,141
---------------------------------------	------------------	------------------	----------------	------------------

72520 - Human Resources

Salaries	2,000,563	2,000,563	-	2,000,563
Employee Benefits	648,335	648,335	-	648,335
Contracted Services	126,830	126,830	-	126,830
Supplies and Materials	48,700	48,700	-	48,700
Equipment	181,200	1,200	-	1,200
Staff Development	16,325	16,325	-	16,325

Total 72520 - Human Resources	3,021,953	2,841,953	-	2,841,953
--------------------------------------	------------------	------------------	----------	------------------

**Clarksville-Montgomery County School System
General Purpose School Fund Budget**

	2020-21 Original Budget	Current Amended Budget	Proposed Increase (Decrease)	Proposed Amended Budget	
72610 - Operation of Plant					
Salaries	6,400,116	6,400,116	-	6,400,116	
Employee Benefits	3,075,372	3,075,372	-	3,075,372	
Contracted Services	792,950	792,950	(550)	792,400	Uniform Laundry to 72510
Supplies and Materials	657,845	657,845	(24,000)	633,845	Portables
Equipment	210,000	210,000	24,000	234,000	Portables
Utilities	6,618,329	6,618,329	-	6,618,329	
Insurance Premiums	498,381	556,732	-	556,732	
Staff Development	10,000	10,000	-	10,000	
Total 72610 - Operation of Plant	18,262,993	18,321,344	(550)	18,320,794	
72620 - Maintenance of Plant					
Salaries	3,032,361	3,032,361	-	3,032,361	
Employee Benefits	1,390,493	1,390,493	-	1,390,493	
Contracted Services	1,172,497	1,172,497	-	1,172,497	
Supplies and Materials	1,346,315	1,346,315	-	1,346,315	
Equipment	23,000	23,000	-	23,000	
Insurance Premiums	62,037	56,762	-	56,762	
Staff Development	10,000	10,000	-	10,000	
Total 72620 - Maintenance of Plant	7,036,703	7,031,428	-	7,031,428	
72901 - COVID-19					
Salaries	-	-	65,000	65,000	Temporary help with contact tracing
Employee Benefits	-	-	4,973	4,973	Associated benefits
Supplies and Materials	-	385,000	-	385,000	
Equipment	-	1,000,000	(69,973)	930,027	Move to salaries and benefits
Total 72901 - COVID-19	-	1,385,000	-	1,385,000	

**Clarksville-Montgomery County School System
General Purpose School Fund Budget**

	2020-21 Original Budget	Current Amended Budget	Proposed Increase (Decrease)	Proposed Amended Budget
73400 - Early Childhood Education				
Salaries	1,672,210	1,672,210	-	1,672,210
Employee Benefits	714,851	714,851	-	714,851
Contracted Services	2,500	2,500	-	2,500
Supplies and Materials	22,500	22,500	-	22,500
Equipment	12,500	12,500	-	12,500
Staff Development	6,000	6,000	-	6,000
Total 73400 - Early Childhood Education	2,430,561	2,430,561	-	2,430,561
82130 - Debt Service				
Principal Payments	6,885,273	6,885,273	-	6,885,273
Total 82130 - Debt Service	6,885,273	6,885,273	-	6,885,273
82230 - Debt Service				
Lease Interest Payments	348,251	348,251	-	348,251
Total 82230 - Debt Service	348,251	348,251	-	348,251
99100 - Interfund Transfers				
	508,812	508,812	-	508,812
Total 99100 - Interfund Transfers	508,812	508,812	-	508,812
Total Expenditures	306,473,769	308,431,105	826,405	309,257,510

Clarksville-Montgomery County School System General Purpose School Fund Budget

	2020-21 Original Budget	Current Amended Budget	Proposed Increase (Decrease)	Proposed Amended Budget
--	-------------------------------	------------------------------	------------------------------------	-------------------------------

Ending Reserves and Fund Balance

Fund Balance	9,374,459	14,083,020	(126,405)	13,956,615		
On-The-Job Injury Reserve	402,218	402,218	-	402,218		Projected fund balance at 6/30/21
Property & Liability Insurance Reserve	781,000	781,000	-	781,000		
BEP Reserve	-	-	-	-		
Career Ladder Reserve	61,967	-826	-	-826		
Assign for Education - Munis Systems	-	0	0	0		
Assign for Education - School Bus Replacements	509,500	509,500	0.00	509,500		
Assign for Technology Equipment, Purchases and Leases	4,480,000	4,078,683	1,000,000	5,078,683		
Assign for Education - TCRS	-	-	-	-		
<hr/>						
Total Reserves and Fund Balance	15,609,144	19,853,595	873,595	20,727,190		

Total Expenditures, Reserves and Fund Balance	322,082,913	328,284,700	1,700,000	329,984,700		
--	-------------	-------------	-----------	-------------	--	--

Consent Agenda

Resolutions 20-11-1 and 20-11-2

October 12, 2020 Commission Minutes

Clerk's Report

Mayor Nominations and Appointments

On Motion to Adopt by Commissioner Beal, seconded by Commissioner Keene, the foregoing Consent Agenda items were Adopted and Approved by the following roll call vote:

District	Commissioner	Vote	District	Commissioner	Vote	District	Commissioner	Vote
1	John M. Gannon	Y	8	Tangi C. Smith	Y	15	David Harper	Y
2	Charles Keene	Y	9	Carmelle Chandler	Y	16	Loretta J. Bryant	Y
3	Joe Smith	Y	10	James R. Lewis	Y	17	Chris Rasnic	Y
4	Rickey Ray	Y	11	Joe L. Creek	Y	18	Jason D. Knight	Y
5	Rashidah A. Leverett	Y	12	Lisa L. Prichard	Y	19	Garland Johnson	Y
6	Arnold Hodges	---	13	Walker R. Woodruff	Y	20	Jerry Allbert	Y
7	Brandon Butts	Y	14	Joshua Beal	Y	21	Larry Rocconi	Y

Yeses – 20 Noes – 0 Abstentions – 0

ABSENT: Arnold Hodges (1)

RESOLUTION TO ACCEPT A DONATION OF \$20,000 FROM THE CLARKSVILLE ROTARY SUNRISE CLUB TO HELP WITH PROJECTS AND OTHER RELATED ITEMS FOR THE WADE BOURNE NATURE CENTER AND TO NAME THE DECK AND OFFER LIMITED USE TO THE ROTARY SUNRISE CLUB

WHEREAS, the Montgomery County Parks & Recreation Department would like to accept a donation from the Clarksville Rotary Sunrise Club to help with projects and other related items for the Nature Center; and

WHEREAS, the Clarksville Rotary Sunrise Club has agreed to donate to the Montgomery County Parks & Recreation Department the sum of \$20,000 that will be paid over a three-year period and will be used by the Montgomery County Parks & Recreation Department for the Nature Center; and

WHEREAS, with this donation the Nature Center Deck will be named the Rotary Sunrise Club Deck and the Rotary Sunrise Club will be allowed to use the meeting room once a week for two hours, said naming and use limited to the first fifteen years after opening; and

NOW, THEREFORE, BE IT RESOLVED by the Montgomery County Board of Commissioners meeting in regular session on this 9th day of November 2020, that this legislative body agrees to accept the monetary donation of \$20,000 from the Clarksville Rotary Sunrise Club for the specific purpose of helping with projects and other related items at the Nature Center and that from opening, for a period of fifteen (15) years, the Sunrise Rotary Club shall have the use of a meeting room at the facility once a week for 2 hours, and the Nature Center Deck for that time period shall be named the Sunrise Rotary Club Deck.

Duly passed and approved this 9th day of November 2020.



Sponsor *Jerry Allent*

Commissioner *[Signature]*

Approved *[Signature]*
County Mayor

Attested *Kellie A. Jackson*
County Clerk

Consent Agenda

Resolutions 20-11-1 and 20-11-2

October 12, 2020 Commission Minutes

Clerk's Report

Mayor Nominations and Appointments

On Motion to Adopt by Commissioner Beal, seconded by Commissioner Keene, the

foregoing Consent Agenda items were Adopted and Approved by the following roll call vote:

District	Commissioner	Vote	District	Commissioner	Vote	District	Commissioner	Vote
1	John M. Gannon	Y	8	Tangi C. Smith	Y	15	David Harper	Y
2	Charles Keene	Y	9	Carmelle Chandler	Y	16	Loretta J. Bryant	Y
3	Joe Smith	Y	10	James R. Lewis	Y	17	Chris Rasnic	Y
4	Rickey Ray	Y	11	Joe L. Creek	Y	18	Jason D. Knight	Y
5	Rashidah A. Leverett	Y	12	Lisa L. Prichard	Y	19	Garland Johnson	Y
6	Arnold Hodges	---	13	Walker R. Woodruff	Y	20	Jerry Allbert	Y
7	Brandon Butts	Y	14	Joshua Beal	Y	21	Larry Rocconi	Y

Yeses – 20 Noes – 0 Abstentions – 0

ABSENT: Arnold Hodges (1)

COUNTY COMMISSION MINUTES FOR

OCTOBER 12, 2020

SUBMITTED FOR APPROVAL NOVEMBER 9, 2020

BE IT REMEMBERED that the Board of Commissioners of Montgomery County, Tennessee, met in regular session, via an electronic meeting, on Monday, October 12, 2020, at 6:00 P.M. Present and presiding, the Hon. Jim Durrett, County Mayor (Chairman). Also present, Kyle Johnson, Chief of Staff, Kellie Jackson, County Clerk, John Smith, Chief Deputy Sheriff, Tim Harvey, County Attorney, Jeff Taylor, Director of Accounts and Budgets, and the following Commissioners:

Jerry Allbert	David Harper	Chris Rasnic
Joshua Beal	Arnold Hodges	Rickey Ray
Loretta J. Bryant	Garland Johnson	Larry Rocconi
Brandon Butts	Jason D. Knight	Joe Smith
Carmelle Chandler	Rashidah A. Leverett	Tangi C. Smith
Joe L. Creek	James R. Lewis	Walker R. Woodruff
John M. Gannon	Lisa L. Prichard	

PRESENT: 20

ABSENT: Charles Keene (1)

When and where the following proceedings were had and entered of record,
to-wit:

The following Resolution was Deferred to the November 9, 2020 Formal Meeting:

CZ-12-2020 Resolution of the Montgomery County Board of Commissioners Amending the Zone Classification of the Property of Mary B. Bourne Rev Trust Richard Brian Bourne

The following Resolutions were Adopted:

CZ-17-2020 Resolution of the Montgomery County Board of Commissioners Amending the Zone Classification of the Property of Stephen Corlew

CZ-18-2020 Resolution of the Montgomery County Board of Commissioners Amending the Zone Classification of the Property of David W. Adkins

CZ-19-2020 Resolution of the Montgomery County Board of Commissioners Amending the Zone Classification of the Property of Eagles Bluff Partnership

The following Resolutions were Adopted as part of the Consent Agenda:

20-10-1 Resolution to Appropriate Funds from the Sheriff's Office Data Processing Reserve Account

20-10-2 Resolution to Amend the Sheriff's Office Vehicle Budget for Fiscal Year 2020

20-10-3 Resolution Amending the Budget of the Montgomery County Capital Projects Fund Appropriating Funds Received from the Governor's Local Government Support Grant

20-10-4 Resolution Authorizing the Acceptance of Grant Funds from the Tennessee Department of Safety & Homeland Security, Tennessee Highway Safety Office

20-10-5 Resolution Amending the Budget of Montgomery County Information Technology for the Regrading of Positions within the Information Technology Department

20-10-6 Resolution to Adopt the 2018 Edition of the International Building Code; the 2018 International Residential Code; the International Plumbing Code; the International Mechanical Code; the 2018 International Fire Code; the 2018 International Energy Code; the 2018 International Fuel and Gas Code; the 2018 International Property Maintenance Code and the 2009 ICC/ANSI A117.1 Accessible & Usable Buildings & Facility Code

20-10-7 Resolution Amending the Zoning Resolution of Montgomery County, Tennessee as it Pertains to Landscape Buffer and Screening Requirements of Industrial Zoned Land in the Rural Area

20-10-8 Resolution Authorizing the Mayor of Montgomery County to Sign a Proposal with the Tennessee Department of Transportation for Project No. 63021-2224-04 and 63021-3224-04

- 20-10-9 Resolution to Authorize Funds for a Montgomery County Parks Department Ten Year Masterplan
- 20-10-10 Resolution Appropriating Funds for the Purpose of Employing an Additional Position in the Assessor's Office
- 20-10-11 Resolution Amending the Budget of Montgomery County Highway Department for the Creation of a GIS Specialist and a Construction Inspector Position
- 20-10-12 Resolution to Enter into an Agreement Regarding Costs and Expense of Autopsies in Montgomery County – City of Clarksville, Tennessee
- 20-10-13 Resolution to Authorize Transfer of Less Than One Acre of Land by Quitclaim for the Consideration at the Property Line of Jordan Road Property/Library and Lot 45 Quail Ridge Road Section B-1

The following items were Approved as part of the Consent Agenda:

- Commission Meeting Minutes dated September 14, 2020
- County Clerk's Report and Notary List
- Nominating Committee Nominations
- County Mayor Nominations
- Highway Department Road Report 3rd Quarter 2020

The following Resolutions were Adopted:

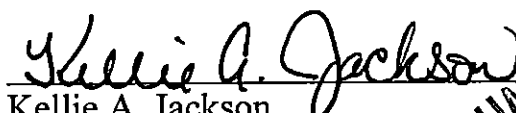
- 20-9-15 Amended Resolution to Levy a County-Wide Motor Vehicle Tax (2nd vote)
- 20-10-14 Resolution to Amend the Budget to Accept Grant Funds from the Federal Government Authorized by the Cares Act

Reports Filed:

1. Building and Codes Monthly Report
2. Accounts and Budgets Monthly Reports
3. Trustee's Monthly Report

The Board was adjourned.

Submitted by:


Kellie A. Jackson
County Clerk



Consent Agenda

Resolutions 20-11-1 and 20-11-2

October 12, 2020 Commission Minutes

Clerk's Report

Mayor Nominations and Appointments

On Motion to Adopt by Commissioner Beal, seconded by Commissioner Keene, the

foregoing Consent Agenda items were Adopted and Approved by the following roll call vote:

District	Commissioner	Vote	District	Commissioner	Vote	District	Commissioner	Vote
1	John M. Gannon	Y	8	Tangi C. Smith	Y	15	David Harper	Y
2	Charles Keene	Y	9	Carmelle Chandler	Y	16	Loretta J. Bryant	Y
3	Joe Smith	Y	10	James R. Lewis	Y	17	Chris Rasnic	Y
4	Rickey Ray	Y	11	Joe L. Creek	Y	18	Jason D. Knight	Y
5	Rashidah A. Leverett	Y	12	Lisa L. Prichard	Y	19	Garland Johnson	Y
6	Arnold Hodges	---	13	Walker R. Woodruff	Y	20	Jerry Allbert	Y
7	Brandon Butts	Y	14	Joshua Beal	Y	21	Larry Rocconi	Y

Yeses – 20 Noes – 0 Abstentions – 0

ABSENT: Arnold Hodges (1)

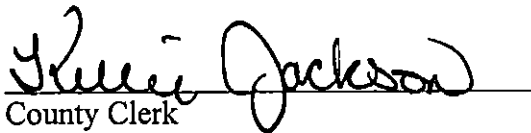
**County Clerk's Report
November 9, 2020**

Comes Kellie A. Jackson, County Clerk, Montgomery County, Tennessee, and presents the County Clerk's Report for the month of October 2020.

I hereby request that the persons named on the list of new applicants to the office of Notary Public be elected. The Oaths of the Deputy County Officials are approved as taken.

This report shall be spread upon the minutes of the Board of County Commissioners.

This the 9th day of November 2020.


County Clerk



OATHS OF DEPUTY COUNTY OFFICIALS

NAME	OFFICE	DATE
Steven Causey	Deputy Assessor	10/13/2020
Case Collins	Deputy Assessor	10/13/2020
Miranda Pellegrini	Deputy Assessor	10/13/2020
Elijah Wilson	Deputy Assessor	10/13/2020
Jacqueline Martin	Deputy County Clerk	09/17/2020

MONTGOMERY COUNTY CLERK
 KELLIE A JACKSON COUNTY CLERK
 350 PAGEANT LANE SUITE 502
 CLARKSVILLE TN 37040
 Telephone 931-648-5711
 Fax 931-572-1104

Notaries to be elected November 09, 2020

NAME	HOME ADDRESS AND PHONE	BUSINESS ADDRESS AND PHONE
1. YVETTE BARTON	257 RAINTREE DR CLARKSVILLE TN 37042 931 645 4729	350 PAGEANT LANE SUITE 502 CLARKSVILLE TN 37040 931 648 5711
2. KERA BENAVENTE	2174 BLAKEMORE DR CLARKSVILLE TN 37040 931 561 7904	2425 WILMA RUDOLPH BLVD CLARKSVILLE TN 37040 931 648 4300
3. COURTNEY BLACKARD	3101 SPRING CREEK CT CLARKSVILLE TN 37040 931-494-3320	2425 WILMA RUDOLPH BLVD CLARKSVILLE TN 37040 931 648 4300
4. SARAH BLUST	2631 DENVER CT CLARKSVILLE TN 37040 423-322-0728	2425 WILMA RUDOLPH BLVD CLARKSVILLE TN 37040 9316484300
5. DONNA BROWNING	4264 WEST MAIN ST ERIN TN 37061 931 721 9141	5270 MARION RD CUNNINGHAM TN 37052 931 387 3879
6. SCOTT N BRYANT	783 VAUGHAN RD CLARKSVILLE TN 37043 931 206 2939	1810 MADISON ST CLARKSVILLE TN 37043 931 648 3071
7. SPARKLE CARTER	126 W CONCORD DR APT A CLARKSVILLE TN 37042 312 320 9019	
8. BRITTNEY CATES	108 CLARK ST MCEWEN TN 37101 931 306 0044	1 PUBLIC SQUARE CLARKSVILLE TN 37040 931 648 6133
9. AMANDA ROSE CRUZ	840 LENNOX RD CLARKSVILLE TN 37042 919 633 1515	1511 VISTA LANE CLARKSVILLE TN 37043 931 648 7444
10. CODY R DAHL	3811 SHADY GROVE RD CLARKSVILLE TN 37043 931 220 9376	498 GRANT AVE CLARKSVILLE TN 37040 931 245 5060
11. STANLEY D DARNELL	180 DENNY RD CLARKSVILLE TN 37043 931 378 9664	120 S SECOND ST STE 202 CLARKSVILLE TN 37040 931 503 9910
12. SARAH DAVIS	1834 MADISON ST APT C19 CLARKSVILLE TN 37043 931 241 1158	1310 MADISON ST CLARKSVILLE TN 37040 931 542 9388
13. SHERESA DEMINGS	1736 RIDGE RUNNER CT CLARKSVILLE TN 37042 915 765 9467	

MONTGOMERY COUNTY CLERK
KELLIE A JACKSON COUNTY CLERK
350 PAGEANT LANE SUITE 502
CLARKSVILLE TN 37040
Telephone 931-648-5711
Fax 931-572-1104

Notaries to be elected November 09, 2020

NAME	HOME ADDRESS AND PHONE	BUSINESS ADDRESS AND PHONE
14. DANA DUNN DEWBERRY	4871 SANGO RD CLARKSVILLE TN 37043 931 980 3829	1310 MADISON ST CLARKSVILLE TN 37040 931 542 9388
15. TAMEKA EGGLESTON	78 LYNNWOOD CIRCLE CLARKSVILLE TN 37040 931-624-9670	
16. KATHY B ELLIS	1011 MCCLURE RD CLARKSVILLE TN 37040 931 216 3722	26581 TOWNSEND COURT STE A CLARKSVILLE TN 37043 931 905 0050
17. ANITA J FATHEREE	2083 WOODLAWN RD WOODLAWN TN 37191 931-980-8108	107 CENTER POINTE DR CLARKSVILLE TN 37040 931 920 2252
18. MARVIN FINDLEY	2548 KILLARNEY CT CLARKSVILLE TN 37042 931 624 4680	20110 ASHBROOK PL ASHBURN VA 20147 571-291 8920
19. JESSICA N GABRIEL	1009 ROEDEER DRIVE CLARKSVILLE TN 37042 931 905 4576	
20. PEYTON GARMAN	2576 MOODY RD CLARKSVILLE TN 37040 281 622 0282	2050 LOWES DR CLARKSVILLE TN 37040 931 431 6800
21. LYNN GODDARD	820 CAROUSEL COURT CLARKSVILLE TN 37043 910 527 7370	2150 WILMA RUDOLPH BLVD SUITE CLARKSVILLE TN 37040 931 771 9070
22. ALICIA GRAVES	1428 DANIEL ST CLARKSVILLE TN 37040 615 586 9056	
23. JOAN LILLARD HAINES	621 FLOWER DR CLARKSVILLE TN 37040 931 338 2719	315 DEADERICK ST STE 1100 NASHVILLE TN 37238 615 742 9514
24. SAUNDRA L HAMILTON	1002 WINESAP RD CLARKSVILLE TN 37040 931 494 6237	120 SOUTH 2ND SUITE 202 CLARKSVILLE TN 37040 931 503 9910
25. AUDRALYN HENDL	1897 MADISON ST CLARKSVILLE TN 37042 931 257 8788	2250F WILMA RUDOLPH BVD CLARKSVILLE TN 37040 931 906 9030

MONTGOMERY COUNTY CLERK
 KELLIE A JACKSON COUNTY CLERK
 350 PAGEANT LANE SUITE 502
 CLARKSVILLE TN 37040
 Telephone 931-648-5711
 Fax 931-572-1104

Notaries to be elected November 09, 2020

NAME	HOME ADDRESS AND PHONE	BUSINESS ADDRESS AND PHONE
26. KIMBERLY A HERNDON	1350 ATTAWAY RD. CLARKSVILLE TN 37040 931 216 2483	621 GRACEY AVE CLARKSVILLE TN 37040 931 387 3201
27. RAVEN S HILL BRYANT	1333 ABIGAIL CT CLARKSVILLE TN 37042 334 507 2263	410 TERRY AVE SEATTLE WA 98109
28. BETHANY JORDAN INGRAM	345 BROADMORE DR CLARKSVILLE TN 37042 928-864-8238	2050 LOWES DR. CLARKSVILLE TN 37040
29. DEBORAH K JOHNSON	4836 GUTHRIE RD CLARKSVILLE TN 37043 931 485 2785	1 PUBLIC SQUARE CLARKSVILLE TN 37040 931 648 6133
30. CHRISTINA JOHNSON	207 BRANDYWINE DR CLARKSVILLE TN 37042 931 249 2638	1477 TINY TOWN RD CLARKSVILLE TN 37042 931 436 2140
31. SHONNA D JOHNSON	3641 FOX TAIL DR CLARKSVILLE TN 37040 931-919-5136	
32. LISA JOINER	325 JASON CIRCLE CLARKSVILLE TN 37040 931-249-1671	3941 HWY 48 CUNNINGHAM TN 37052 931-378-2575
33. MARY T KOEBLER	1150 HUTCHESON LANE CLARKSVILLE TN 37040 931 645 5206	
34. VALERIE LABARGE	3427 OAK LAWN DR CLARKSVILLE TN 37042 931 624 4864	2050 LOWES DR CLARKSVILLE TN 37040 931 431 6800
35. JESSICA MARIE LEYRER	287 NORTHWOOD TERRACE CLARKSVILLE TTN 37042 615 573 0799	
36. GREGORY JOHN LEYRER	287 NORTHWOOD TERRACE CLARKSVILLE TN 37042 931 278 9169	
37. L GENE MAY JR	419 ATHENA DR CLARKSVILLE TN 37042 205 329 0847	
38. UMEKA MCELRATH	1765 BRITNEY CT CLARKSVILLE TN 37042 931 291 5899	123-A CENTER POINTE DR CLARKSVILLE TN 37040 931 906 8400

MONTGOMERY COUNTY CLERK
KELLIE A JACKSON COUNTY CLERK
350 PAGEANT LANE SUITE 502
CLARKSVILLE TN 37040
Telephone 931-648-5711
Fax 931-572-1104

Notaries to be elected November 09, 2020

<u>NAME</u>	<u>HOME ADDRESS AND PHONE</u>	<u>BUSINESS ADDRESS AND PHONE</u>
39. CASEY MORGAN	4405 IRONHORSE WAY CLARKSVILLE TN 37040 931 241 1937	1571 VISTA LANE SUITE C CLARKSVILLE TN 37043 931 320 1084
40. NICHOLE NORIEGA	1118 HUNTING CREEK CT CLARKSVILLE TN 37042	1753 MEMORIAL DR CLARKSVILLE TN 37040 9312789767
41. LATASHIA OUTLAW	289 FRITZ CIR CLARKSVILLE TN 37042 931-305-3676	1352 COLLEGE ST CLARKSVILLE TN 37040 931-378-7046
42. ELAINE LEA POWELL	145 KESWICK CT CLARKSVILLE TN 37040 931 627 2135	2601 WILMA RUDOLPH BLVD CLARKSVILLE TN 37040 931 245 4184
43. ERIN R POWELL	3744 FOX HOLE DR CLARKSVILLE TN 37040 915-383-3451	908 MAX CT CLARKSVILLE TN 37043 931-896-2182
44. ALYSSA RANGEL	2928 BREWSTER DR CLARKSVILLE TN 37042 410-443-3445	1477 TINY TOWN RD CLARKSVILLE TN 37042 9314362140
45. JOSHUA REES	4285 BUDDS CREEK RD CUNNINGHAM TN 37052 931 802 0413	114 FRANKLIN STREET CLARKSVILLE TN 37040 931 647 8500
46. ASHLEY L SCHMIDT	3116 HIGHWAY 13 CUMBERLAND FURNACE TN 37051 931 436 3415	2 MILLENNIUM PLAZA CLARKSVILLE TN 37040 931 648 5703
47. GLORIA SCHUTZ	2941 NORFLEET RD ADAMS TN 37010 931-801-2225	151 WEST DUNBAR CAVE RD CLARKSVILLE TN 37040 931-591-3773
48. MONICA SLATE	354 HAMPSHIRE DR CLARKSVILLE TN 37043 931-241-8800	127 SOUTH THIRD ST CLARKSVILLE TN 37040 9316459900
49. KRISTINA SMITH	518 BELMONT RD CLARKSVILLE TN 37040 931 206 7394	218 S 3RD ST STE B CLARKSVILLE TN 37040 931 378 5784
50. SARAH SUMPTER	1982 MARK AVE CLARKSVILLE TN 37043 931-338-8402	127 SOUTH 3RD ST CLARKSVILLE TN 37040 9316459900

MONTGOMERY COUNTY CLERK
KELLIE A JACKSON COUNTY CLERK
350 PAGEANT LANE SUITE 502
CLARKSVILLE TN 37040
Telephone 931-648-5711
Fax 931-572-1104

Notaries to be elected November 09, 2020

<u>NAME</u>	<u>HOME ADDRESS AND PHONE</u>	<u>BUSINESS ADDRESS AND PHONE</u>
51. SHIRLEY ANN TABB	1342 AMBLESIDE DR CLARKSVILLE TN 37043 931 551 8687	681 SUMMER ST CLARKSVILLE TN 37040 931 221 7737
52. KIM THOMPSON	277 CULLOM WAY CLARKSVILLE TN 37043 931 624 9105	350 PAGEANT LANE, SUITE 502 CLARKSVILLE TN 37040 931 648 5711
53. M VASQUEZ	102 GRASSMIRE DRIVE CLARKSVILLE TN 37042 931 624 6547	350 PAGEANT LANE SUITE 502 CLARKSVILLE TN 37042 931 648 5711
54. LA TESHA S WALKER	230 NEEDMORE RD APT E CLARKSVILLE TN 37040 931 304 7412	
55. CIARA WESTBROOK	608 MAIN ST CLARKSVILLE TN 37040 931 538 5417	498 GRANT AVE CLARKSVILLE TN 37040 931 245 5060
56. DANASIA WILLIS	3652 KENDRA CT S CLARKSVILLE TN 37040 313-550-1364	
57. KATHA C WILSON	1967 MARK AVENUE CLARKSVILLE TN 37043 931 206 1885	127 S RICHVIEW RD CLARKSVILLE TN 37043 931 552 1440
58. LEEANNA WOODALL	3813 MALIKI DR CLARKSVILLE TN 37042 850-830-3564	

Consent Agenda

Resolutions 20-11-1 and 20-11-2

October 12, 2020 Commission Minutes

Clerk's Report

Mayor Nominations and Appointments

On Motion to Adopt by Commissioner Beal, seconded by Commissioner Keene, the

foregoing Consent Agenda items were Adopted and Approved by the following roll call vote:

District	Commissioner	Vote	District	Commissioner	Vote	District	Commissioner	Vote
1	John M. Gannon	Y	8	Tangi C. Smith	Y	15	David Harper	Y
2	Charles Keene	Y	9	Carmelle Chandler	Y	16	Loretta J. Bryant	Y
3	Joe Smith	Y	10	James R. Lewis	Y	17	Chris Rasnic	Y
4	Rickey Ray	Y	11	Joe L. Creek	Y	18	Jason D. Knight	Y
5	Rashidah A. Leverett	Y	12	Lisa L. Prichard	Y	19	Garland Johnson	Y
6	Arnold Hodges	---	13	Walker R. Woodruff	Y	20	Jerry Allbert	Y
7	Brandon Butts	Y	14	Joshua Beal	Y	21	Larry Rocconi	Y

Yeses – 20 Noes – 0 Abstentions – 0

ABSENT: Arnold Hodges (1)

COUNTY MAYOR NOMINATIONS

NOVEMBER 12, 2020

VETERANS SERVICE ORGANIZATION

Rich Holladay nominated to replace Dewey Browder for a four-year term to expire November 2024.

Rob Salome, who has been filling the unexpired term of Dave Cooper, is nominated to fill his first four-year term to expire November 2024.

COMMUNITY CORRECTIONS ADVISORY BOARD

Patsy Gregory (Robertson Co Commission) is nominated to serve another three-year term to expire November 2023.

Reid Poland (defense attorney) is nominated to serve another three-year term to expire November 2023.

Vicki Ogburn (non-profit agency) is nominated to fill the unexpired term of Alicia Sharpton with term to expire November 2021.

COUNTY MAYOR APPOINTMENTS

NOVEMBER 12, 2020

E911 EMERGENCY COMMUNICATION BOARD

Fire Chief Freddie Montgomery is appointed to fill the unexpired term of Mark Wojnarek with term to expire January 2024.

SENIOR CITIZEN BOARD OF DIRECTORS

Stephanie Mason, who has been filling the unexpired term of Juan Reyes, is reappointed to serve a three-year term to expire April 2023.

Mike Williamson, who has been filling the unexpired term of Alena Sampson, is reappointed to serve a three-year term to expire April 2023.

Ronnie DeVault appointed to replace Howard Rex Williams Sr for a three-year term to expire April 2023.

DeVelma Dixon appointed to fill the unexpired term of Toni Bullock with term to expire April 2021.

Consent Agenda

Resolutions 20-11-1 and 20-11-2

October 12, 2020 Commission Minutes

Clerk's Report

Mayor Nominations and Appointments

On Motion to Adopt by Commissioner Beal, seconded by Commissioner Keene, the

foregoing Consent Agenda items were Adopted and Approved by the following roll call vote:

District	Commissioner	Vote	District	Commissioner	Vote	District	Commissioner	Vote
1	John M. Gannon	Y	8	Tangi C. Smith	Y	15	David Harper	Y
2	Charles Keene	Y	9	Carmelle Chandler	Y	16	Loretta J. Bryant	Y
3	Joe Smith	Y	10	James R. Lewis	Y	17	Chris Rasnic	Y
4	Rickey Ray	Y	11	Joe L. Creek	Y	18	Jason D. Knight	Y
5	Rashidah A. Leverett	Y	12	Lisa L. Prichard	Y	19	Garland Johnson	Y
6	Arnold Hodges	---	13	Walker R. Woodruff	Y	20	Jerry Allbert	Y
7	Brandon Butts	Y	14	Joshua Beal	Y	21	Larry Rocconi	Y

Yeses – 20 Noes – 0 Abstentions – 0

ABSENT: Arnold Hodges (1)

**RESOLUTION OF THE MONTGOMERY COUNTY BOARD OF COMMISSIONERS
 APPROPRIATING PHASE I DESIGN FUNDING FOR THE EXPANSION OF
 ROSSVIEW ROAD NEAR THE FUTURE SITE OF THE CLARKSVILLE
 MONTGOMERY COUNTY SCHOOLS SYSTEM'S PROPOSED NEW SCHOOL
 COMPLEX**

WHEREAS, according to the Regional Planning Commission data, Montgomery County is experiencing continued growth throughout all regions of the County and the growth in the Northeastern quadrant is far out pacing the growth in the rest of Montgomery County; and

WHEREAS, the Montgomery County Board of Commissioners voted in favor of Resolution 20-9-16 on September 14, 2020 to enter into a purchase agreement for the acquisition of a site to be used for a new school facility; and

WHEREAS, the proposed site for school facility does not presently have adequate road access, utility services, and other public infrastructure that is necessary to serve the site and the area; and

WHEREAS, in order to provide proper access to the site as well as provide safer and more efficient traffic flow through this portion of Rossview Road for the citizens of Montgomery County, the County wishes to make improvements and widen this portion of Rossview Road; and

WHEREAS, it is vital that an architect be employed to coordinate the Phase I design of Rossview Road widening so that it may coordinate with the design and construction phase of the middle school.

NOW, THEREFORE, BE IT RESOLVED, by the Montgomery County Board of County Commissioners assembled in Regular Session on this 9th day of November 2020 that this commission wishes to appropriate an amount not to exceed four hundred thousand dollars (\$400,000) for the Phase I design of the Rossview Road widening project.

BE IT FURTHER RESOLVED that it is reasonably expected that Montgomery County, Tennessee will reimburse itself to the appropriate fund for certain expenditures in connection with the foregoing, in an amount not to exceed four hundred thousand dollars (\$400,000) from the proceeds of general obligation or revenue bonds of Montgomery County, Tennessee. This resolution shall be placed in the minutes of the Board of County Commissioners and shall be made for inspection by the general public at the office of the Board of County Commissioners. This resolution constitutes a declaration of official intent under Treas. Reg. § 1.150-2.

Duly passed and approved this 9th day of November 2020.

**COUNTY CLERK
 SEAL
 MONTGOMERY COUNTY, TN**

Attest *Shelley A. Jackson*
 County Clerk

Sponsor *[Signature]*
 Commissioner *[Signature]*
 Approved *[Signature]*
 County Mayor

(Prior to voting, Mayor Durrett announced \$400,000 is changed to \$3,000,000.)

A Motion to Suspend the Rules was Approved unanimously prior to voting on Resolution 20-11-3.

20-11-3

On Motion to Adopt by Commissioner J. Smith, seconded by Commissioner Prichard.

Mayor Durrett stated, "What you were provided last Monday, that resolution had \$400,000, it's now \$3,000,000 and that includes environmental, design and right of way acquisition".

Jeff Taylor, Director of Accounts and Budgets, stated there was a correction and this does not include right of way. It is approximately \$1,000,000 for environmental and \$2,000,000 for design.

The foregoing Resolution was Adopted by the following roll call vote:

District	Commissioner	Vote	District	Commissioner	Vote	District	Commissioner	Vote
1	John M. Gannon	Y	8	Tangi C. Smith	Y	15	David Harper	Y
2	Charles Keene	Y	9	Carmelle Chandler	Y	16	Loretta J. Bryant	Y
3	Joe Smith	Y	10	James R. Lewis	Y	17	Chris Rasnic	Y
4	Rickey Ray	Y	11	Joe L. Creek	Y	18	Jason D. Knight	Y
5	Rashidah A. Leverett	Y	12	Lisa L. Prichard	Y	19	Garland Johnson	Y
6	Arnold Hodges	---	13	Walker R. Woodruff	Y	20	Jerry Allbert	Y
7	Brandon Butts	Y	14	Joshua Beal	Y	21	Larry Rocconi	Y

Yeses – 20 Noes – 0 Abstentions – 0

ABSENT: Arnold Hodges (1)

UNFINISHED BUSINESS

**20-10-10 CORRECTIONS IN ACCOUNT NUMBERS FOR RESOLUTION APPROPRIATING
FUNDS FOR THE PURPOSE OF EMPLOYING AN ADDITIONAL POSITION IN THE
ASSESSOR'S OFFICE**

	<u>FROM</u>	<u>TO</u>	
Clerical Personnel*	101-54110-00000-52-51060	101-52300-00000-52-51620	\$ 36,062.00
Social Security	101-54110-00000-52-52010	101-52300-00000-52-52010	\$ 2,236.00
State Retirement	101-54110-00000-52-52040	101-52300-00000-52-52040	\$ 3,246.00
Life Insurance	101-54110-00000-52-52060	101-52300-00000-52-52060	\$ 36.00
Health Insurance	101-54110-00000-52-52070	101-52300-00000-52-52070	\$ 12,243.00
Medicare	101-54110-00000-52-52120	101-52300-00000-52-52120	\$ 523.00
Furniture & Fixtures	101-54110-00000-52-57110	101-52300-00000-52-57110	\$ 250.00
Communication Eqp	101-52600-00000-52-57080	101-52300-00000-52-57080	\$ 350.00
Data Processing Eqp	101-52600-00000-52-57090	101-52300-00000-52-57090	\$ 2,000.00
			<u>\$ 56,946.00</u>

*Please note that the Clerical Personnel line was originally Deputies under the Sheriff's Office department code.



**MONTGOMERY
COUNTY**
TENNESSEE

Montgomery County Government

Building and Codes Department

350 Pageant Lane Suite 309
Clarksville, TN 37040

Phone
931-648-5718

Fax
931-553-5121

Memorandum

TO: Jim Durrett, County Mayor
FROM: Rod Streeter, Building Commissioner *RS*
DATE: November 2, 2020
SUBJ: October 2020 PERMIT REVENUE REPORT

The number of permits issued in October 2020 is as follows: Building Permits 85, Grading Permits 2, Mechanical Permits 89, and Plumbing Permits 23 for a total of 199 permits.

The total cost of construction was \$9,898,947.00. The revenue is as follows: Building Permits \$41,530.09, Grading Permits \$7,800, Plumbing Permits \$2,300.00, Mechanical Permits: \$11,850.00 Plans Review \$17,740.00, BZA \$250.00, Re-Inspections \$2,400.00, Pre-Inspection \$0.00, Safety Inspection \$0.00, and Miscellaneous Fees \$0.00 the total revenue received in October 2020 was \$83,870.09.

FISCAL YEAR 2020/2021 TOTALS TO DATE:

NUMBER OF SINGLE FAMILY PERMITS:	265
COST OF CONSTRUCTION:	\$78,647,676.00
NUMBER OF BUILDING PERMITS:	526
NUMBER OF PLUMBING PERMITS:	128
NUMBER OF MECHANICAL PERMITS:	517
NUMBER OF GRADING PERMITS:	10
BUILDING PERMITS REVENUE:	\$310,093.72
PLUMBING PERMIT REVENUE:	\$12,850.00
MECHANICAL PERMIT REVENUE:	\$61,050.00
GRADING PERMIT REVENUE:	\$12,394.50
RENEWAL FEES:	\$498.70
PLANS REVIEW FEES:	\$38,103.27
BZA FEES:	\$1,250.00
RE-INSPECTION FEES:	\$11,250.00
PRE-INSPECTION FEES:	\$0.00
SAFETY INSPECTION FEES:	\$0.00
MISCELLANEOUS FEES:	\$0.00
MISC REFUNDS	\$0.00
SWBA	\$0.00
TOTAL REVENUE:	\$446,991.49

OCTOBER 2020 GROUND WATER PROTECTION

The number of septic applications received for October 2020 was 0 with total revenue received for the county was \$0.00. The State of Tennessee has went online for all services.

The lease agreement beginning on July 1, 2020-June 30, 2021 was agreed upon between the County and State.

FISCAL YEAR 2020/2021 TOTALS TO DATE:

NUMBER OF GROUND WATER APPLICATIONS (SEPTIC)	0
NUMBER OF SEPTIC TANK DISCLOSURE REQUEST	0
GROUND WATER PROTECTION (STATE: \$0.00)	\$0.00
TOTAL REVENUE:	\$446,991.49
RS/bf	

cc: Jim Durrett, County Mayor
Kyle Johnson, Chief of Staff
Jeff Taylor, Accounts and Budgets
Kellie Jackson, County Clerk



**MONTGOMERY
COUNTY**
TENNESSEE

Montgomery County Government

Building and Codes Department

350 Pageant Lane Suite 309
Clarksville, TN 37040

Phone
931-648-5718

Fax
931-553-5121

Memorandum

TO: Jim Durrett, County Mayor
FROM: Rod Streeter, Building Commissioner *RS*
DATE: November 2, 2020
SUBJ: October 2020 ADEQUATE FACILITIES TAX REPORT

The total number of receipts issued in October 2020 is as follows: City 156 and County 40 for a total of 196.

There were 151 receipts issued on single-family dwellings, 14 receipts issued on multi-family dwellings with a total of 56 units, 24 receipts issued on condominiums with a total of 24 units, 0 receipts issued on townhouses. There was 1 exemption receipt issued.

The total taxes received for October 2020 was \$129,500.00

The total refunds issued for October 2020 was \$0.00.

Total Adequate Facilities Tax Revenue for October 2020 was \$129,500.00

FISCAL YEAR 2020/2021 TOTALS TO DATE:

TOTAL NUMBER OF Adequate Facilities Tax Receipts Issued:	City: 562
	County: 328
	Total: 890
TOTAL REFUNDS:	\$0.00
TOTAL TAXES RECEIVED:	\$617,000.00

<u>NUMBER OF LOTS AND DWELLINGS ISSUED</u>	<u>CITY</u>	<u>COUNTY</u>	<u>TOTAL</u>
LOTS 5 ACRES OR MORE:	2	25	27
SINGLE-FAMILY DWELLINGS:	473	269	742
MULTI-FAMILY DWELLINGS (77 Receipts):	336	57	393
CONDOMINIUMS: (37 Receipts)	26	11	37
TOWNHOUSES:	0	0	0
EXEMPTIONS: (7 Receipts)	3	4	7
REFUNDS ISSUED: (0 Receipt)	(0)	(0)	(0)

RS/bf

cc: Jim Durrett, County Mayor
 Kyle Johnson, Chief of Staff
 Jeff Taylor, Accounts and Budgets
 Kellie Jackson, County Clerk

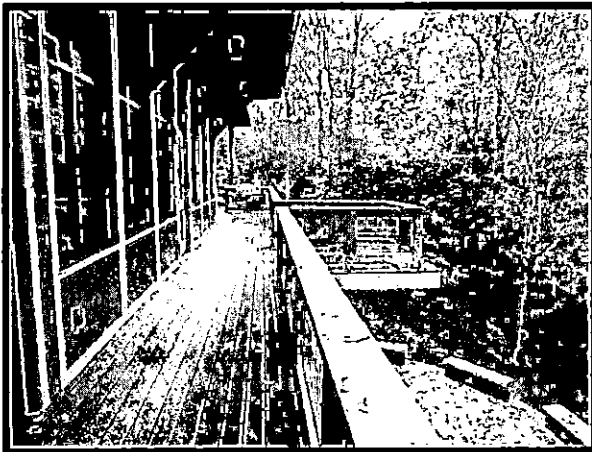
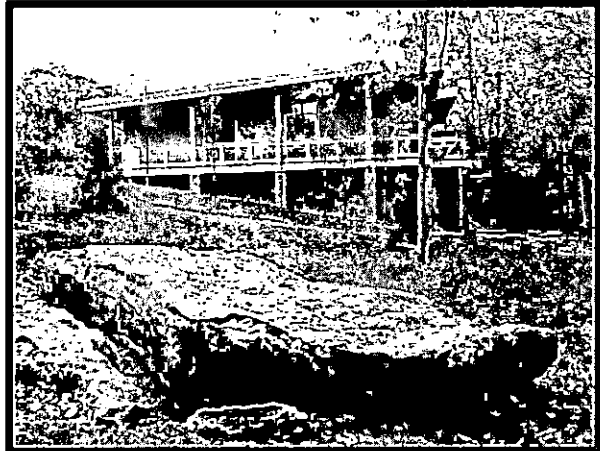


Capital Projects – November 2020 – Construction Update Report

Rotary Park Nature Center

Architect/Designer: Lyle Cook Martin
General Contractor: B. R. Miller & Co.
Project Status: Construction
Contract Date: 07/11/2019
Contract Completion Date: 08/15/2020 Interior, 10/12/2020 Exterior
Budget: \$ 220,000 (Design), \$ 3,050,000 (includes \$ 500,000 Grant for Construction)
Current Contract Amount: \$ 193,157 (Design), \$ 2,390,647 (Construction), \$ 100,278 (Data & A/V)
Percentage Complete: 99%
Comments:

- Grand opening ceremony was held on October 24, 2020.
- Project is substantially complete with only minor punch-list items remaining.
- Parks Department have moved into their new offices.



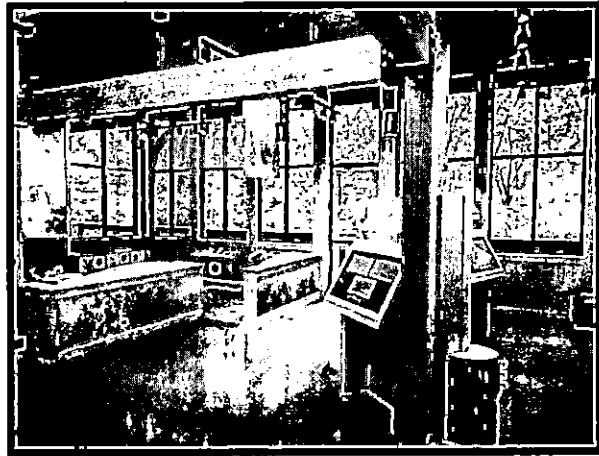
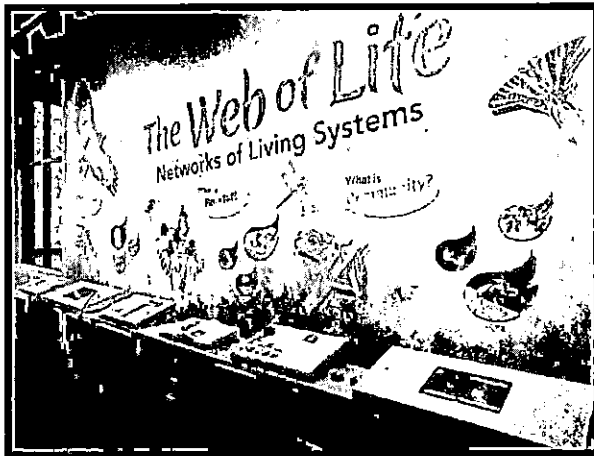


Capital Projects – November 2020 – Construction Update Report

Rotary Park Nature Center Exhibits

Architect/Designer: BLF Marketing
General Contractor: Building Four Fabrication
Project Status: Production/Fabrication
Contract Date: 12/12/2019
Contract Completion Date: 08/30/2020 + 30 calendar days for installation
Budget: \$ 450,000
Current Contract Amount: \$ 185,400 (Design) \$ 186,453 (Production & Installation)
Percentage Complete: 99%
Comments:

- Installation of Exhibits is complete and open to the public.





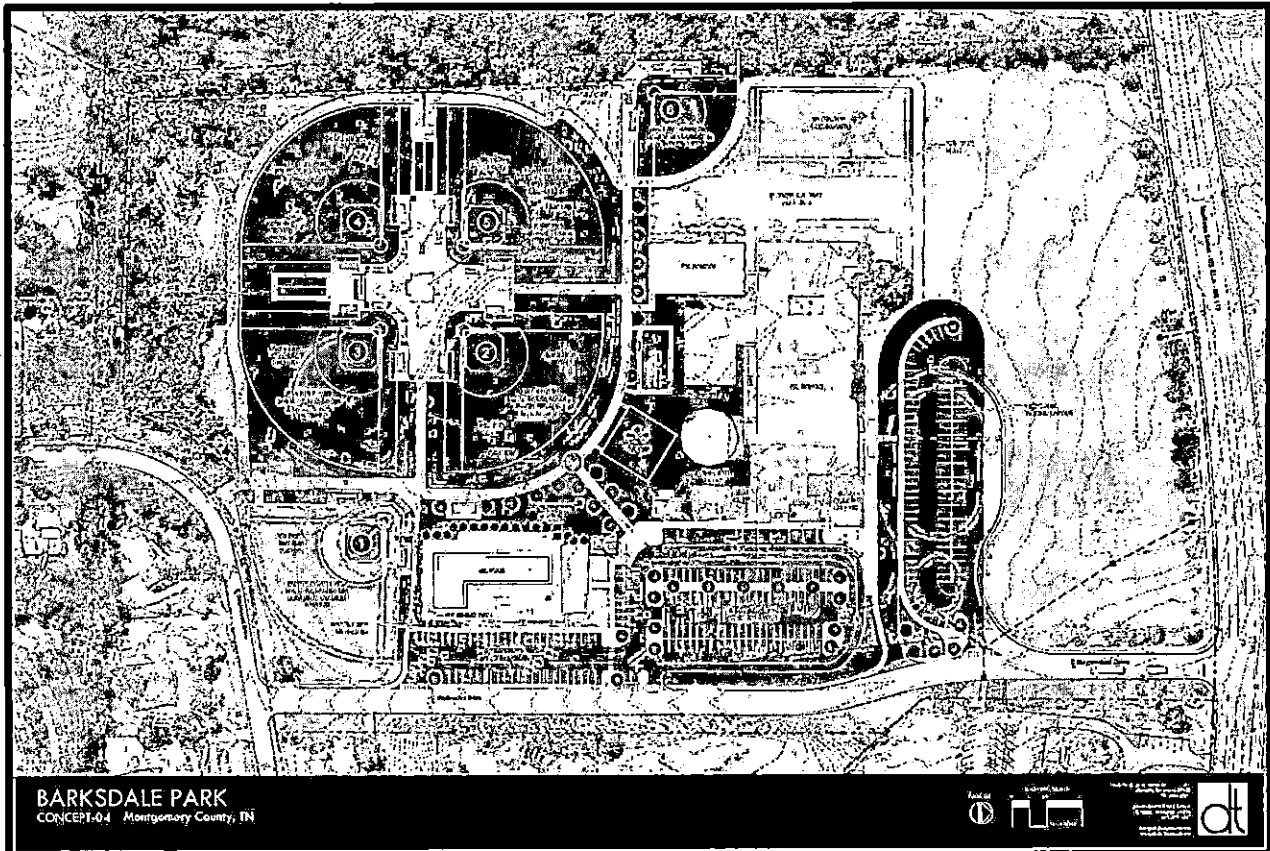
Capital Projects – November 2020 – Construction Update Report

Barksdale Park & MeriCourt Park

Architect/Designer: Violette Architecture
General Contractor: TBD
Project Status: Design Development
Contract Date: TBD
Contract Completion Date: TBD
Budget: \$ 275,000 (Design)
Current Contract Amount: \$ 230,031 (Design), \$ 18,900 (Survey)
Percentage Complete: 35% Design

Comments:

- MeriCourt plans have been progressed through a 50% design phase and the scope of work has been revised and slightly increased as planning continues with the Park's Dept.
- Barksdale plans development are sitting at around 20%.
- Both projects are continuing to be developed concurrently through the design phase.
- Remaining design dollars necessary for completion will be requested in January. Construction dollars will likely be requested in June under the normal budget procedure.



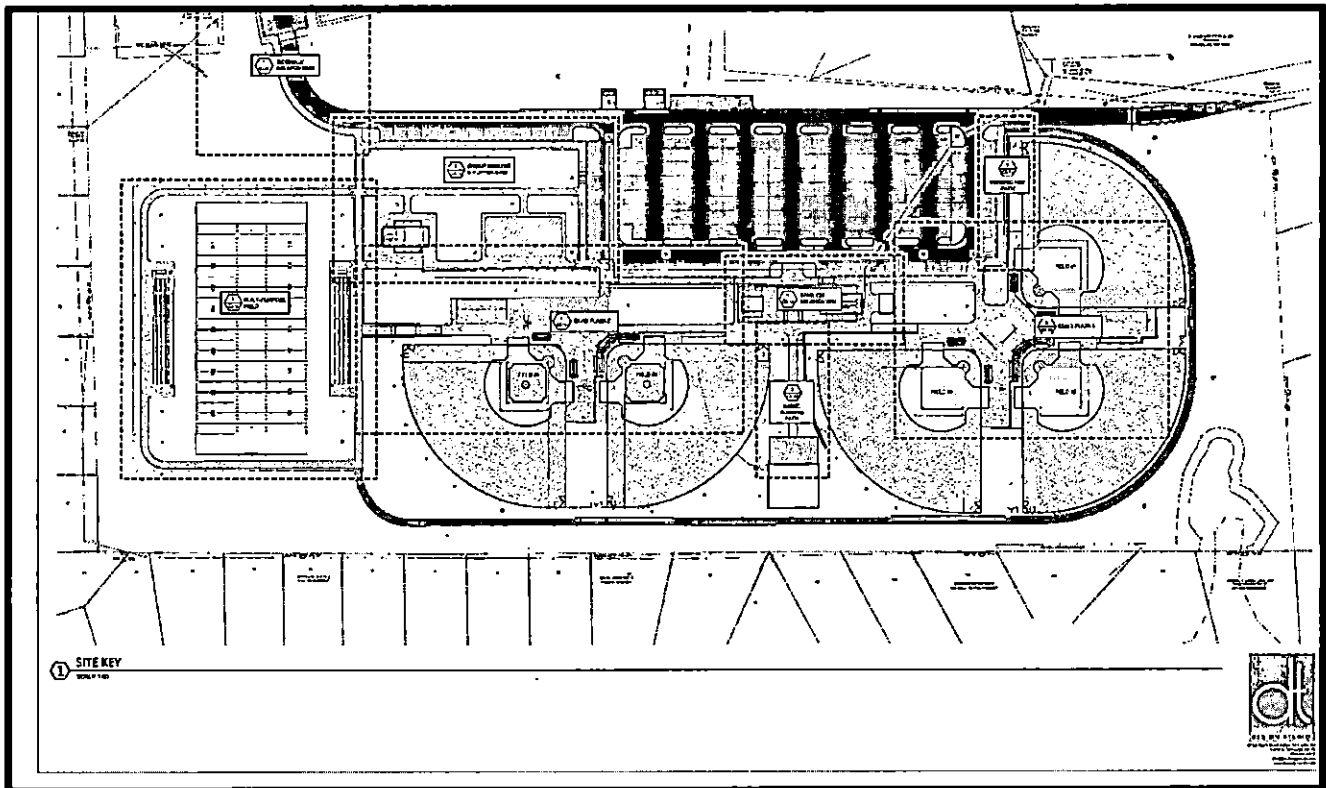


Capital Projects – November 2020 – Construction Update Report

Stokes Field

Architect/Designer: Moore Design Services
General Contractor: TBD
Project Status: Construction Drawing Phase
Contract Date: TBD
Contract Completion Date: TBD
Budget: \$ 600,000 (Design)
Current Contract Amount: \$ 509,400 (Design), \$ 30,345 (Survey), \$ 8,225 (Geotech)
Percentage Complete: 90% Design
Comments:

- 95% Construction Drawings are to be submitted to the County for review this week. This final review and comment set will be completed and ready for a bid by the time that funding is request in Jan/Feb 2021.
- Small improvements will be completed on the existing school parking and connection roadway for connectivity. (5) baseball fields, (1) multipurpose field, playground, increased parking, and associated concession and pavilion structures are planned.





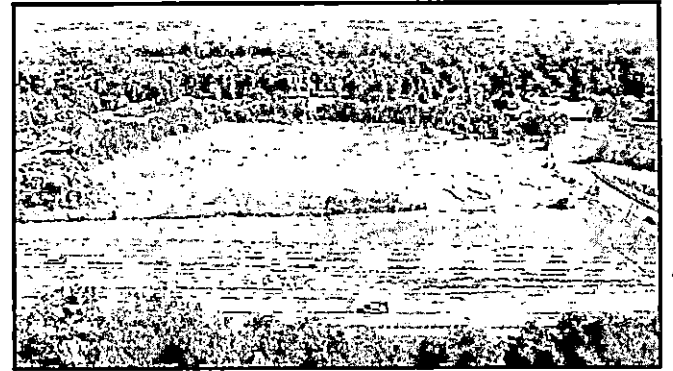
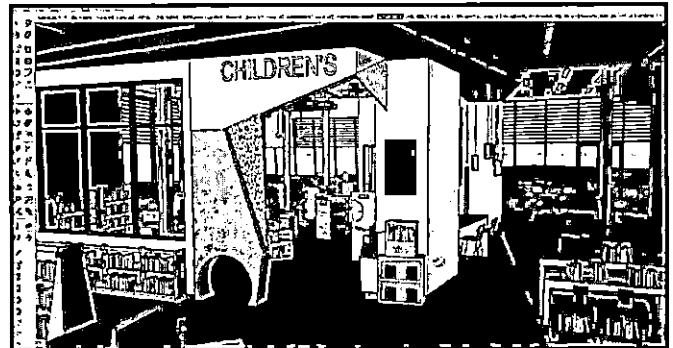
Capital Projects – November 2020 – Construction Update Report

Library Branch

Architect/Designer: HBM Architects
General Contractor: Codell Construction
Project Status: Construction Documents Design
Contract Date: TBD
Contract Completion Date: TBD
Budget: \$ 943,744 (Design + Pre-construction services)
Current Contract Amount: \$ 55,000 (Preconstruction Phase Services) \$ 864,813 (Design)
Percentage Complete: 98% Design
Comments:

- Design plans are completed, but construction cost estimates have escalated between the 50% plans and the 95% plan submittal. The Contractor and Architect continue to work through budget cutting exercises and coordination. We hope to have an updated plan and cost estimate in order to bring forward our budget request by Feb/March 2021.
- A bus transfer station has been accommodated on the northern portion of the property for 4 busses operated by the Clarksville Transit System. This portion of the project will be bid out separate from the primary bid, and the City will be responsible for funding on the bus transfer details, if it is constructed.

(Aerial Photographs Completed by Photographs by David)





Capital Projects – November 2020 – Construction Update Report

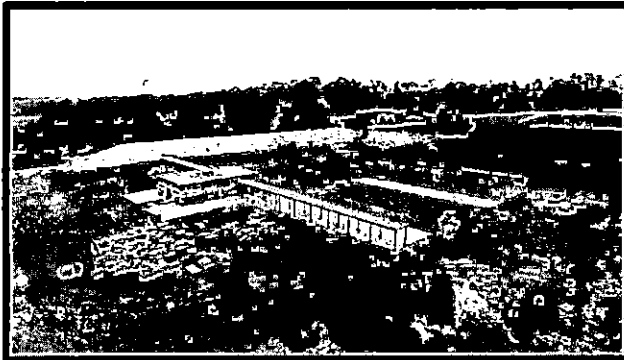
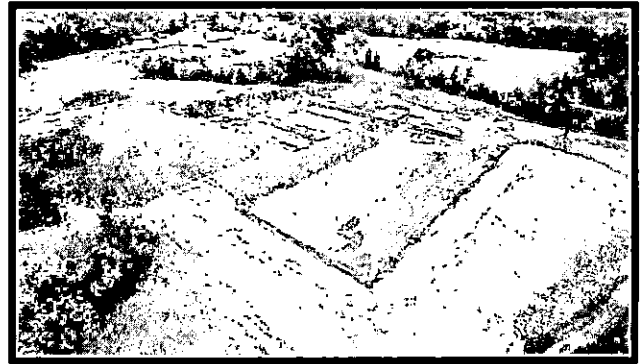
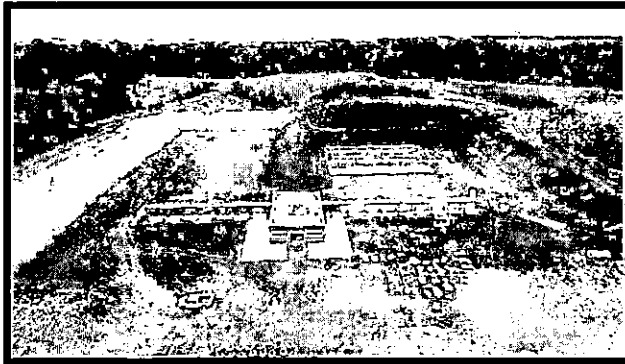
Public Safety Training Complex

Architect/Designer: Moore Design Services & J. Clark Architects
General Contractor: Pride Concrete, LLC
Project Status: Construction
Contract Date: 8/29/2019
Contract Completion Date: 05/23/2021
Budget: \$ 300,000 (Design) \$ 6,040,000 (Construction)
Current Contract Amount: \$ 395,300 (Design) \$ 5,700,873 (Construction), \$ 139,100 (Data/Other)
Percentage Complete: 75%

Comments:

- The training building stands at about 95% complete. The pistol and rifle ranges have concrete lanes being poured along with bullet trap construction.
- 90% of the grading operations around the range have been completed and stabilized. All of the South Entry Road remains to be constructed. Roadway and Parking lot paving are scheduled for December of this year, but weather will be a key factor to the timing of this. All work is currently scheduled to be completed by May of 2021 pending further time extensions due to weather.

(Aerial Photographs Completed by Photographs by David)





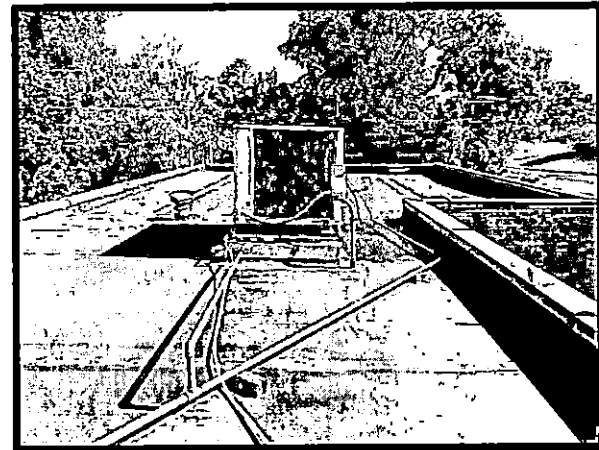
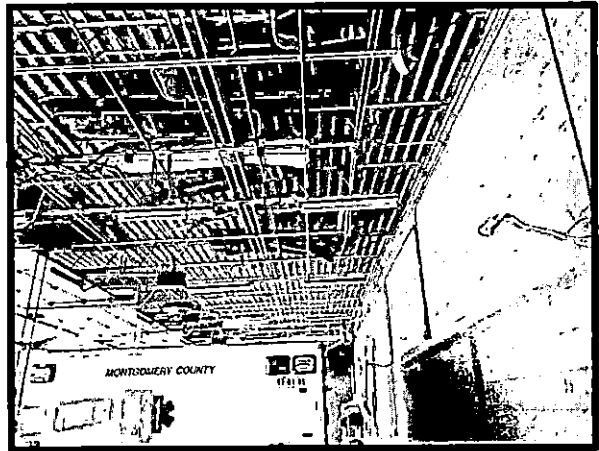
Capital Projects – November 2020 – Construction Update Report

EMS Station 20- Haynes St.

Architect/Designer: J. Clark Architecture & Design, LLC
General Contractor: TBD
Project Status: Design Development Phase
Contract Date: TBD
Contract Completion Date: TBD
Budget: \$ 60,000 (Design), Pending (Construction)
Current Contract Amount: \$ 52,920 (Design)
Percentage Complete: 70% Design

Comments:

- EMS Station 20 is located on Haynes Street that is along the Madison Street Corridor.
- Construction work will be completed concurrently while crews are still working out of the vehicle bay, but the station's office and living area function will temporarily be relocated to the old Administration Building which is still vacant.
- Design will address interior renovation and improvements as well as exterior roof and parking lot.
- Construction Design plans continue but funding will be needed to move into bidding/construction.





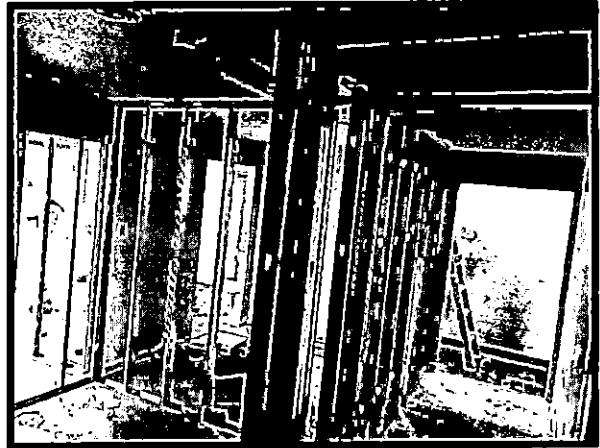
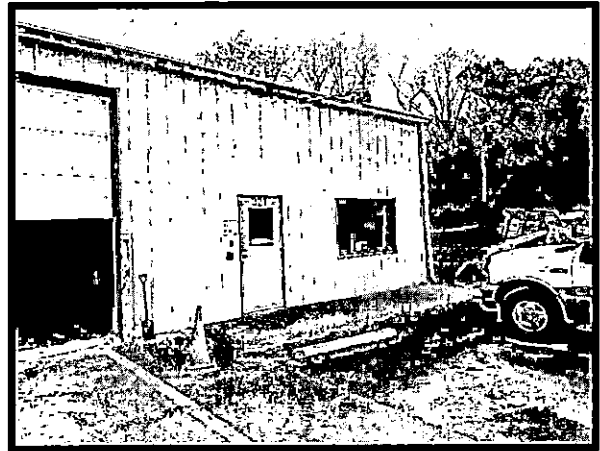
Capital Projects – November 2020 – Construction Update Report

EMS Station 22 – Warfield Blvd.

Architect/Designer: Montgomery County Engineering
General Contractor: Jeff Shepherd Construction
Project Status: Construction
Contract Date: 9/24/2020
Contract Completion Date: 1/22/2021
Budget: \$ 309,275
Current Contract Amount: \$ 127,085
Percentage Complete: 30%

Comments:

- MCG Engineering completed a design plan and bid for exterior improvements of building façade and asphalt parking lot. ADA restroom improvements are also being addressed on the interior of the building.
- Exterior sidewalk and paving improvements will be completed directly in front of the station.





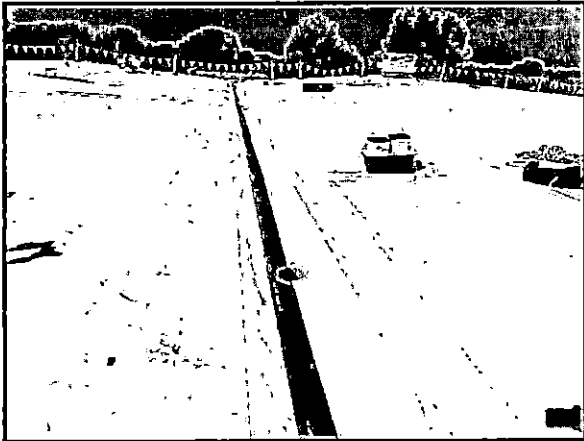
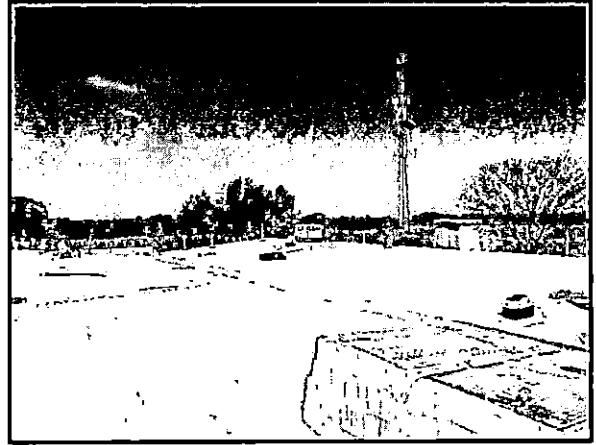
Capital Projects – November 2020 – Construction Update Report

Facilities Warehouse Roof

Architect/Designer: Montgomery County Engineering
General Contractor: Genesis Roofing Company
Project Status: Bidding/Contracts
Contract Date: 8/17/2020
Contract Completion Date: 11/23/2020
Budget: \$ 200,000
Current Contract Amount: \$ 123,122
Percentage Complete: 0%

Comments:

- Membrane overlay and internal gutter design has been completed and bids were received 7-30-20.
- 10 roofing contractors showed interest in the bid.
- Pre-construction meeting will be held and contracts are to be signed.





Capital Projects – November 2020 – Construction Update Report

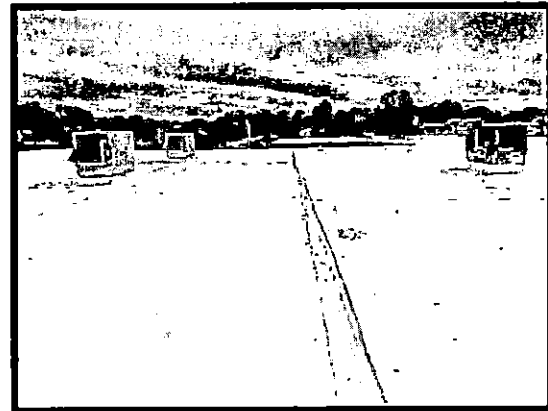
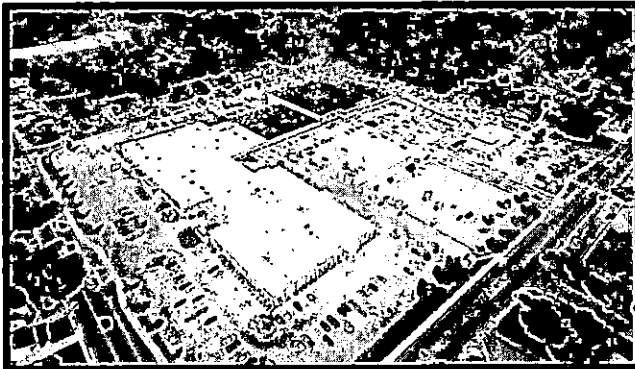
Veterans Plaza Reroof

Architect/Designer: Tremco
General Contractor: Tremco
Project Status: Construction
Contract Date: 3/17/2020
Contract Completion Date: 11/23/2020
Budget: \$ 700,000 (Phase I), \$1,600,000 (Phase II)
Current Contract Amount: \$ 579,777 (Phase I), \$1,572,238 (Phase II)
Percentage Complete: 70%

Comments:

- Project was developed through the State Contract, and Montgomery County Engineering worked with Tremco to establish a roof coating system that will rejuvenate the existing roof membrane for an additional 20-year warranty. New coating is a white color to aid in energy efficiency for the building.
- Roof cleaning started in April on approximately 1/3 of the roof area (Phase 1). Phase 1 was completed in June and Phase 2 began in July. Some weather delays have occurred, but work is still scheduled to be complete by the end of November pending temperatures and rain.

(Aerial Photographs Completed by Photographs by David)





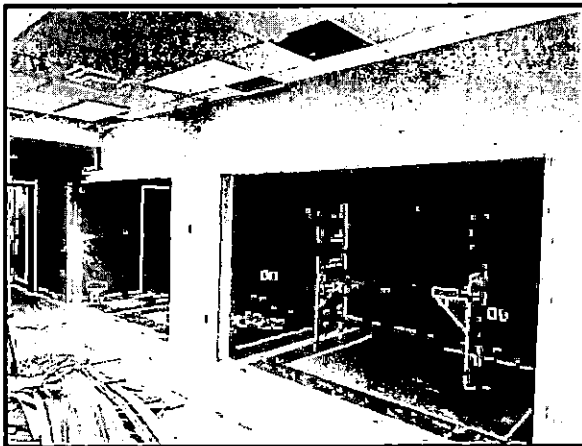
Capital Projects – November 2020 – Construction Update Report

Veterans Plaza Adult Probation/PDI Renovation

Architect/Designer: Montgomery County Engineering
General Contractor: Triple S Contracting
Project Status: Construction
Contract Date: 8/19/2020
Contract Completion Date: 12/22/2020
Budget: \$ (Adult Probation Funding Account)
Current Contract Amount: \$ 61,432.28
Percentage Complete: 50%

Comments:

- The Veterans Plaza Training Room is being remodeled for Adult Probation’s training needs.
- This project is funded from Adult Probation accounts and overseen by the Engineering Department.
- Expanded meeting space was acquired from the adjacent, unused café space.





Capital Projects – November 2020 – Construction Update Report

Lafayette Road Widening

Architect/Designer: Gresham, Smith & Partners
General Contractor: TBD
Project Status: Right of Way Acquisition
Contract Date: TBD
Contract Completion Date: TBD
Budget: \$ 2,575,000
Current Contract Amount: TBD
Percentage Complete: 92%

Comments:

- All land offers have been made. 5 properties have closed. 2 properties are still to be closed and have been difficult to get completed due to mortgage issues and funding/lien interests by the TN Land Trust. We continue to work through ROW complications with anticipation that final plans will be completed shortly after ROW acquisition, followed by a construction bid.
- Uncertain of bid date at this time.





Capital Projects – November 2020 – Construction Update Report

Upcoming/Ongoing Projects

ADA Transition Plan

Architect/Designer: Montgomery County Engineering
Project Status: EMS 20 and EMS 22 renovation projects are addressing some issues found within the County-wide self-evaluation. Additional repairs and adjustments are being scheduled for work through the MCG Facilities Department.

Animal Control

Architect/Designer: J. Clark Architects
Project Status: New land purchase has experienced setbacks and additional land and existing buildings are being reviewed/considered. Design phase will begin once funding is secured and land has been chosen and surveyed.

Cumberland Heights – Bartee Center Gym Roof Replacement

Architect/Designer: MCG Engineering
Project Status: Project has been bid and contracts documents are being secured with the low bidder. Roof will have new plywood installed along with new shingles.

Historic Courthouse Roof/Windows & Jail Exterior Brick Study

Architect/Designer: MCG Engineering (currently)
Project Status: MCG Engineering is designing a partial re-roofing plan for the Courthouse as the most pressing project. After discussions with the Mayor and a consultant roofing contractor, it was determined that cleaning of the existing slate roofing will not be completed. We are still working on plans to remediate the gutter system that is likely leaking. Also working on a brick sealer and joint sealant project to prevent water infiltration that is coming into the building from the vertical faces surrounding the structure. The conditions that create these leaks continue to be difficult to diagnosis and replicate. This project may be coordinated with the Jail Exterior Brick sealant project, but it could be separated pending funding availability. The Jail Exterior project will be much more difficult for accessing the North face of the building, which is inaccessible for ground equipment.

1986 Jail MP&E Evaluation

Architect/Designer: Smith Seckman Reid, Inc.
Project Status: SSR has completed a full building evaluation of the 1986 (Old) Jail facility. This project started out as a sewer evaluation/replacement and has morphed into a full Mechanical, Plumbing, and Electrical evaluation due to the increased interests in



Capital Projects – November 2020 – Construction Update Report

getting this facility up to code and operational for potential inmate or workouts use. This will be an extensive update in order to become compliant with current codes and Sheriff Department security requirements. SSR is working to complete a scope of work summary along with a cost estimate. At that point they will provide us with a proposal fee to begin designing all of the modifications and updates that will be required within the project.

Montgomery County Rail Service Authority

Architect/Designer:

Montgomery County Engineering & CSR Engineering

Project Status:

Bidding is complete for the Timber Repair project that is funded by Grant dollars. Construction should begin within the next month after all contract documents have been executed. Multiple other grants applications are currently be reviewed by Feds.

Rossvie Road Widening

Architect/Designer:

TBD

Project Status:

An advertisement for design firms was sent out in early August. (11) design firms submitted Phase 1 qualifications in September. These were narrowed down to (4) firms that were to submit a Phase 2 submittal and complete an interview. Interviews were completed last week, and MCG Engineering will begin negotiations with the selected firm this week to establish a contract and design fees. This is an extremely fast past project as far as roadway projects go, and we will be doing everything that we can to further it along under the requirements established by TDOT Local Programs office. The proposed schedule for this road widening should have it completed by late 2026 to early 2027. Every possible option to expedite this schedule will be completed to try to exceed this schedule, but there are multiple environmental, design, and Right of Way acquisition hurdles to cross before we get to construction.

Rotary Park Restrooms

Architect/Designer:

Lyle Cook Martin Architects

Project Status:

The Parks Department has submitted a grant application for the construction of additional restroom facilities within the front and back sides of Rotary Park. Design dollars are being used from funds that are remaining from the Nature Center Project. Design phase will be ongoing while Parks is awaiting the results of their grant application.



Capital Projects – November 2020 – Construction Update Report

Veterans Plaza Data Room Generator & HVAC

Architect/Designer:

Smith Seckman Reid, Inc.

Project Status:

SSR has completed 95% design phase on a dedicated Generator and HVAC system specifically for the Property Unit Data room. Project status is well ahead of funding, but it will be ready for bidding toward the middle of 2021 after funding has been approved.

Veterans Plaza Fire Alarm Replacement

Architect/Designer:

Design/Build

Project Status:

Beacon Technologies is working to complete a fire alarm replacement project within Civic Hall and DHS. Existing fire alarm panel failed and stopped working and is being replaced with new components. This project is funded through the Facilities & Maintenance Dept. budget and is being overseen by MCG Engineering.

Veterans Plaza Rekeying

Architect/Designer:

Montgomery County Engineering

General Contractor:

TBD- Phase 2

Project Status:

Hardware replacement and lock replacement has been completed for Phase 1. Phase 2 is being designed and programmed with the remaining departments.

Weakley Park

Architect/Designer:

Interior Design – Montgomery County Engineering

Project Status:

MCG Engineering is working on interior renovation design. Exterior site improvements are being discussed and will be coordinated with a consultant firm. Funding for construction will likely be requested by the Parks office for this upcoming budget cycle.

MONTGOMERY COUNTY DRIVER SAFETY PROGRAM

QUARTERLY REPORT: REVENUE AND ATTENDEES

JULY - SEPTEMBER 2020

***Adult Driver Improvement Program**

<u>Rev Rec:</u> July 2020.....\$ 1,218.37	<u>Attendees:</u> July 2020.....14
August 2020.....\$ 1,090.12	August 2020.....22
September 2020...\$ 1,410.75	September 2020...24
Total.....\$ 3,719.24	Total.....60

***ADIP Book Fees**

<u>Rev Rec:</u> July 2020.....\$ 63.17
August 2020.....\$ 56.52
September 2020.....\$ 73.15
Total.....\$ 192.84

***JUVENILE COURT DDC ALIVE AT 25**

<u>Rev Rec:</u> July 2020.....\$ 0.00	<u>Attendees:</u> July 2020..... 0
August 2020.....\$ 5.70	August 2020.....0
September 2020...\$ 0.00	September 2020.....0
Total.....\$ 5.70	Total.....0

***JUVENILE COURT DDC 4**

<u>Rev Rec:</u> July 2020.....\$	228.00	<u>Attendees:</u> July 2020.....	6
August 2020..\$	171.00	August 2020	4
September 2020...\$	399.00	September 2020....	3
Total.....\$	798.00	Total.....	13

***Seatbelt**

<u>Rev Rec:</u> July 2020.....\$	0.00	<u>Attendees:</u> July 2020.....	0
August 2020.....\$	0.00	August 2020.....	0
September 2020...\$	0.00	September 2020..	0
Total.....\$.....	0.00	Total.....	0

***"Reality"**

<u>Rev Rec:</u> July 2020.....\$	0.00	<u>Attendees:</u> July 2020.....	0
August 2020.....\$	0.00	August 2020.....	0
September 2020..\$	171.00	September 2020...	5
Total.....\$	0.00	Total.....	5

FOR 2021 04

JOURNAL DETAIL 2021 1 TO 2021 12

	ORIGINAL APPROF	REVISED BUDGET	YTD EXPENDED	MTD EXPENDED	ENCUMBRANCES	AVAILABLE BUDGET	PCT USED
101 COUNTY GENERAL							
51100 COUNTY COMMISSION	371,862	401,862	81,131.96	16,088.44	81,025.00	239,705.04	40.4%
51210 BOARD OF EQUALIZATION	8,344	8,344	645.90	.00	.00	7,698.10	7.7%
51220 BEER BOARD	5,020	5,020	1,041.63	.00	.00	3,978.37	20.7%
51240 OTHER BOARDS & COMMITTEES	5,168	5,168	1,372.58	.00	.00	3,795.42	26.6%
51300 COUNTY MAYOR	560,928	560,928	178,491.16	43,563.13	4,779.06	377,657.78	32.7%
51310 HUMAN RESOURCES	650,701	666,724	170,954.74	24,744.13	184,244.53	311,524.78	53.3%
51400 COUNTY ATTORNEY	250,000	261,737	107,250.02	48,947.91	11,736.77	142,749.98	45.5%
51500 ELECTION COMMISSION	884,245	1,061,611	341,592.84	78,712.73	24,856.41	695,161.75	34.5%
51600 REGISTER OF DEEDS	638,241	638,241	193,723.65	37,382.83	1,688.28	442,829.07	30.6%
51720 PLANNING	436,949	436,949	220,520.46	108,078.75	.00	216,428.54	50.5%
51730 BUILDING	492,060	508,060	145,397.60	32,963.66	18,804.34	343,858.06	32.3%
51750 CODES COMPLIANCE	990,385	994,415	331,030.48	76,678.41	5,547.76	657,836.71	33.8%
51760 GEOGRAPHICAL INFO SYSTEMS	290,215	290,215	27,500.00	27,500.00	.00	262,715.00	9.5%
51800 COUNTY BUILDINGS	432,066	432,471	147,641.30	31,896.54	25,360.28	259,469.42	40.0%
51810 FACILITIES	2,953,283	2,953,283	1,003,356.97	317,712.11	175,719.36	1,774,206.67	39.9%
51900 OTHER GENERAL ADMINISTRATION	1,234,769	1,259,106	328,026.20	77,495.11	59,818.14	871,261.35	30.8%
51910 ARCHIVES	357,407	357,407	109,144.02	22,169.78	3,821.39	244,441.59	31.6%
52100 ACCOUNTS & BUDGETS	788,097	812,709	257,839.02	56,143.14	15,636.48	539,233.50	33.6%
52200 PURCHASING	321,977	321,977	108,566.94	24,721.30	10,956.98	202,453.08	37.1%
52300 PROPERTY ASSESSOR'S OFFICE	1,636,725	1,693,796	492,945.69	103,972.87	84,250.73	1,116,599.58	34.1%
52400 COUNTY TRUSTEES OFFICE	790,507	790,507	233,798.57	48,812.69	43,404.79	513,303.64	35.1%
52500 COUNTY CLERK'S OFFICE	2,932,992	2,959,192	940,263.27	206,322.36	44,128.93	1,974,799.80	33.3%
52600 INFORMATION SYSTEMS	2,768,804	6,001,806	1,556,540.51	573,065.43	1,118,733.65	3,326,532.13	44.6%
52900 OTHER FINANCE	61,300	61,300	5,849.02	.00	4,384.80	51,066.18	16.7%
53100 CIRCUIT COURT	3,947,829	3,953,824	1,272,995.08	276,386.63	31,934.79	2,648,894.07	33.0%
53300 GENERAL SESSIONS COURT	673,598	673,598	225,956.22	56,228.18	.00	447,641.78	33.5%
53330 DRUG COURT	70,000	76,134	3,014.12	515.32	7,438.68	65,681.55	13.7%
53400 CHANCERY COURT	750,426	750,426	252,857.65	57,737.24	4,029.27	493,539.08	34.2%
53500 JUVENILE COURT	1,384,690	1,384,690	408,247.64	100,309.15	201,568.43	774,873.93	44.0%
53600 DISTRICT ATTORNEY GENERAL	88,250	88,250	8,761.67	3,601.44	8,870.80	70,617.53	20.0%
53610 OFFICE OF PUBLIC DEFENDER	7,313	7,313	1,422.46	16.88	.00	5,890.54	19.5%
53700 JUDICIAL COMMISSIONERS	276,671	277,267	91,517.04	19,918.02	2,208.98	183,540.98	33.8%
53800 VETERANS' TREATMENT COURT	340,543	340,543	79,935.06	19,456.56	39,249.83	221,358.11	35.0%
53900 OTHER ADMINISTRATION/ JUSTICE	523,456	523,456	82,013.84	7,285.09	.00	441,442.16	15.7%
53910 ADULT PROBATION SERVICES	1,166,536	1,266,536	283,436.33	69,952.73	113,282.87	869,816.80	31.3%
54110 SHERIFF'S DEPARTMENT	13,489,704	14,321,213	4,724,554.93	1,210,799.30	231,413.16	9,365,245.23	34.6%
54120 SPECIAL PATROLS	3,515,712	3,515,712	1,090,864.16	249,558.63	33,739.74	2,391,108.10	32.0%
54150 DRUG ENFORCEMENT	115,900	115,900	46,846.35	23,883.61	1,797.39	67,256.26	42.0%
54160 SEXUAL OFFENDER REGISTRY	14,000	21,815	364.20	48.83	7,815.00	13,635.80	37.5%
54210 JAIL	16,212,996	16,344,735	5,281,315.93	1,156,480.42	2,044,584.92	9,018,834.15	44.8%



11/03/2020 08:24
mlopez

MONTGOMERY COUNTY GOVERNMENT, TN
YEAR-TO-DATE BUDGET REPORT

P 2
glytdbud

FOR 2021 04

JOURNAL DETAIL 2021 1 TO 2021 12

	ORIGINAL APPROP	REVISED BUDGET	YTD EXPENDED	MTD EXPENDED	ENCUMBRANCES	AVAILABLE BUDGET	PCT USED
54220 WORKHOUSE	2,034,502	2,034,502	696,723.94	155,725.29	366,097.21	971,680.85	52.2%
54230 COMMUNITY CORRECTIONS	587,605	594,147	194,397.12	40,304.34	57,663.69	342,086.65	42.4%
54240 JUVENILE SERVICES	301,197	301,197	91,152.49	23,251.15	1,405.43	208,639.08	30.7%
54310 FIRE PREVENTION & CONTROL	560,786	602,411	104,831.34	16,139.38	47,334.28	450,245.38	25.3%
54410 EMERGENCY MANAGEMENT	631,840	633,090	251,418.43	75,634.95	2,165.03	379,506.54	40.1%
54490 OTHER EMERGENCY MANAGEMENT	0	95,719	1,351.92	.00	.00	94,367.08	1.4%
54610 COUNTY CORONER / MED EXAMINER	368,000	368,000	83,350.00	31,500.00	17,600.00	267,050.00	27.4%
55110 HEALTH DEPARTMENT	268,468	269,628	77,919.20	18,458.36	527.64	191,180.68	29.1%
55120 RABIES & ANIMAL CONTROL	1,396,985	1,399,724	439,294.90	133,257.47	37,163.41	923,266.12	34.0%
55130 AMBULANCE SERVICE	13,779,902	13,801,387	3,848,128.90	876,783.86	641,538.76	9,311,719.34	32.5%
55190 OTHER LOCAL HLTH SRVCS (WIC)	3,285,202	3,285,202	842,707.74	183,862.48	103.00	2,442,391.26	25.7%
55390 APPROPRIATION TO STATE	221,892	221,892	.00	.00	.00	221,892.00	.0%
55590 OTHER LOCAL WELFARE SERVICES	20,825	20,875	2,500.00	1,500.00	50.00	18,325.00	12.2%
55900 OTHER PUBLIC HEALTH & WELFARE	25,000	25,000	.00	.00	.00	25,000.00	.0%
56500 LIBRARIES	2,109,555	2,109,555	527,388.75	.00	.00	1,582,166.25	25.0%
56700 PARKS & FAIR BOARDS	1,739,121	1,864,121	560,065.13	112,648.80	71,841.95	1,232,213.92	33.9%
56900 OTHER SOCIAL, CULTURAL & REC	9,688	9,688	2,637.06	223.98	.00	7,050.94	27.2%
57100 AGRICULTURAL EXTENSION SERVIC	449,988	450,432	80,002.57	74,173.84	4,711.41	365,717.73	18.8%
57300 FOREST SERVICE	2,000	2,000	.00	.00	.00	2,000.00	.0%
57500 SOIL CONSERVATION	59,963	59,963	20,498.15	4,979.02	318.00	39,146.85	34.7%
57800 STORM WATER MANAGEMENT	0	246,519	.00	.00	246,518.69	.00	100.0%
58110 TOURISM	942,000	942,000	377,308.50	119,130.35	.00	564,691.50	40.1%
58120 INDUSTRIAL DEVELOPMENT	1,236,459	1,236,459	318,950.20	159,475.10	.00	917,508.80	25.8%
58220 AIRPORT	403,000	403,000	189,656.00	94,828.00	.00	213,344.00	47.1%
58300 VETERAN'S SERVICES	547,807	547,807	181,105.33	40,317.17	2,787.23	363,914.44	33.6%
58400 OTHER CHARGES	1,951,966	1,951,966	465,829.45	.00	.00	1,486,136.55	23.9%
58500 CONTRIBUTION TO OTHER AGENCIE	216,500	239,557	65,504.00	.00	23,057.39	150,996.00	37.0%
58600 EMPLOYEE BENEFITS	612,600	612,600	232,492.49	127,488.78	.00	380,107.51	38.0%
58900 MISC-CONT RESERVE	15,000	42,372	17,298.00	11,532.00	10,074.00	15,000.00	64.6%
64000 LITTER & TRASH COLLECTION	154,452	154,452	52,642.07	12,032.88	.00	101,809.93	34.1%
TOTAL COUNTY GENERAL	96,371,972	101,669,506	30,563,880.89	7,522,396.55	6,177,788.66	64,927,836.01	36.1%
131 GENERAL ROADS							
61000 ADMINISTRATION	520,770	521,195	164,881.37	39,138.14	4,280.07	352,033.56	32.5%
62000 HIGHWAY & BRIDGE MAINTENANCE	6,114,752	6,243,288	1,368,415.42	253,534.36	614,302.26	4,260,570.06	31.8%
63100 OPERATION & MAINT OF EQUIPMEN	1,370,151	1,379,349	364,915.20	88,946.41	69,205.12	945,228.45	31.5%
63600 TRAFFIC CONTROL	462,818	464,818	116,150.15	23,354.13	78,590.89	270,076.96	41.9%
65000 OTHER CHARGES	580,429	580,699	287,721.05	3,440.95	16,318.76	276,659.19	52.4%
66000 EMPLOYEE BENEFITS	57,980	57,980	17,508.22	8,967.66	.00	40,471.78	30.2%
68000 CAPITAL OUTLAY	3,981,500	4,759,253	599,716.80	5,098.04	659,336.61	3,500,199.99	26.5%

FOR 2021 04

JOURNAL DETAIL 2021 1 TO 2021 12

	ORIGINAL APPROP	REVISED BUDGET	YTD EXPENDED	MTD EXPENDED	ENCUMBRANCES	AVAILABLE BUDGET	PCT USED
TOTAL GENERAL ROADS	13,088,400	14,006,582	2,919,308.21	422,479.69	1,442,033.71	9,645,239.99	31.1%
151 DEBT SERVICE							
82110 PRINCIPAL-GENERAL GOVERNMENT	10,387,488	10,387,488	.00	.00	.00	10,387,488.00	.0%
82130 PRINCIPAL-EDUCATION	22,667,859	22,667,859	519,987.00	103,997.40	.00	22,147,872.00	2.3%
82210 INTEREST-GENERAL GOVERNMENT	4,320,929	4,320,929	2,193,834.17	40,125.00	.00	2,127,094.83	50.8%
82230 INTEREST-EDUCATION	5,839,246	5,839,246	2,860,984.46	25,250.00	.00	2,978,261.54	49.0%
82310 OTHER DEBT SERV-COUNTY GOVT	353,500	353,500	8,386.84	.00	.00	345,113.16	2.4%
82330 OTHER DEBT SERV.-EDUCATION	678,000	678,000	19,441.60	1,666.67	.00	658,558.40	2.9%
TOTAL DEBT SERVICE	44,247,022	44,247,022	5,602,634.07	171,039.07	.00	38,644,387.93	12.7%
171 CAPITAL PROJECTS							
00000 NON-DEDICATED ACCOUNT	80,000	80,000	16,307.58	.00	.00	63,692.42	20.4%
91110 GENERAL ADMINISTRATION PROJEC	1,764,532	100,649,805	2,596,977.64	824,412.73	1,056,260.12	96,996,567.73	3.6%
91120 ADMIN OF JUSTICE PROJECTS	0	35,000	.00	.00	.00	35,000.00	.0%
91130 PUBLIC SAFETY PROJECTS	1,045,000	5,783,994	1,005,128.03	189,701.00	2,576,677.04	2,202,188.79	61.9%
91140 PUBLIC HEALTH /WELFARE PROJEC	502,900	3,384,093	115,173.73	114,674.40	1,209,664.08	2,059,255.59	39.1%
91150 SOCIAL/CULTURAL/REC PROJECTS	0	1,608,861	497,887.16	209,369.22	569,628.10	541,346.09	66.4%
91190 OTHER GENERAL GOVT PROJECTS	0	35,675	.00	.00	.00	35,675.00	.0%
91200 HIGHWAY & STREET CAP PROJECTS	0	3,413,512	195.94	195.94	46,403.81	3,366,912.00	1.4%
91300 EDUCATION CAPITAL PROJECTS	0	14,561,136	4,207,628.00	.00	.00	10,353,508.00	28.9%
TOTAL CAPITAL PROJECTS	3,392,432	129,552,077	8,439,298.08	1,338,353.29	5,458,633.15	115,654,145.62	10.7%
266 WORKER'S COMPENSATION							
51750 CODES COMPLIANCE	0	0	179.76	.00	.00	-179.76	100.0%
51810 FACILITIES	0	0	115.54	115.54	.00	-115.54	100.0%
51910 ARCHIVES	0	0	110.00	110.00	.00	-110.00	100.0%
51920 RISK MANAGEMENT	532,049	532,049	83,583.06	22,301.06	83,406.29	365,059.65	31.4%
52200 PURCHASING	0	0	140.66	140.66	.00	-140.66	100.0%
52600 INFORMATION SYSTEMS	0	0	252.90	.00	.00	-252.90	100.0%
54110 SHERIFF'S DEPARTMENT	0	0	20,983.93	5,533.78	.00	-20,983.93	100.0%
54210 JAIL	0	0	4,566.32	2,048.13	.00	-4,566.32	100.0%
54310 FIRE PREVENTION & CONTROL	0	0	37.00	37.00	.00	-37.00	100.0%



11/03/2020 08:24
mlopez

MONTGOMERY COUNTY GOVERNMENT, TN
YEAR-TO-DATE BUDGET REPORT

P 4
glytdbud

FOR 2021 04

JOURNAL DETAIL 2021 1 TO 2021 12

	ORIGINAL APPROP	REVISED BUDGET	YTD EXPENDED	MTD EXPENDED	ENCUMBRANCES	AVAILABLE BUDGET	PCT USED
54410 EMERGENCY MANAGEMENT	0	0	726.36	408.10	.00	-726.36	100.0%
55120 RABIES & ANIMAL CONTROL	0	0	316.00	.00	.00	-316.00	100.0%
55130 AMBULANCE SERVICE	0	0	4,749.28	1,447.96	.00	-4,749.28	100.0%
55754 LANDFILL OPERATION/MAINTENANC	0	0	1,431.27	.00	.00	-1,431.27	100.0%
TOTAL WORKER'S COMPENSATION	532,049	532,049	117,192.08	32,142.23	83,406.29	331,450.63	37.7%
GRAND TOTAL	157,631,875	290,007,235	47,642,313.33	9,486,410.83	13,161,861.81	229,203,060.18	21.0%

** END OF REPORT - Generated by Mariel Lopez-Gonzalez **



11/03/2020 08:26
mlopez

MONTGOMERY COUNTY GOVERNMENT, TN
YEAR-TO-DATE BUDGET REPORT

P 1
glytdbud

FOR 2021 04

JOURNAL DETAIL 2021 1 TO 2021 12

	ORIGINAL ESTIM REV	REVISED EST REV	ACTUAL YTD REVENUE	ACTUAL MTD REVENUE	REMAINING REVENUE	PCT COLL
101 COUNTY GENERAL						
40110 CURRENT PROPERTY TAX	-58,404,000	-58,404,000	.00	.00	-58,404,000.00	.0%
40120 TRUSTEE'S COLLECTIONS - PYR	-1,000,000	-1,000,000	-372,908.92	.00	-627,091.08	37.3%
40125 TRUSTEE COLLECTIONS - BANKRUP	-30,000	-30,000	-5,406.97	.00	-24,593.03	18.0%
40130 CIRCUIT/CHANCERY COLLECT-PYR	-500,000	-500,000	.00	.00	-500,000.00	.0%
40140 INTEREST & PENALTY	-300,000	-300,000	-41,205.65	.00	-258,794.35	13.7%
40161 PMTS IN LIEU OF TAXES - T.V.A	-763	-763	-762.74	-762.74	-.26	100.0%
40162 PMTS IN LIEU OF TAXES -UTILIT	-1,415,000	-1,415,000	-324,687.78	-7,909.03	-1,090,312.22	22.9%
40163 PMTS IN LIEU OF TAXES - OTHER	-838,065	-838,065	.00	.00	-838,065.00	.0%
40220 HOTEL/MOTEL TAX	-1,600,000	-1,600,000	-381,119.27	.00	-1,218,880.73	23.8%
40250 LITIGATION TAX - GENERAL	-410,000	-410,000	-83,153.56	-30,463.98	-326,846.44	20.3%
40260 LITIGATION TAX-SPECIAL PURPOS	-80,000	-80,000	-16,242.59	-6,210.53	-63,757.41	20.3%
40270 BUSINESS TAX	-1,400,000	-1,400,000	-204,065.96	-51,444.34	-1,195,934.04	14.6%
40320 BANK EXCISE TAX	-200,000	-200,000	.00	.00	-200,000.00	.0%
40330 WHOLESALE BEER TAX	-350,000	-350,000	-148,073.68	-47,867.02	-201,926.32	42.3%
40350 INTERSTATE TELECOMMUNICATIONS	-20,000	-20,000	.00	.00	-20,000.00	.0%
41120 ANIMAL REGISTRATION	-185,000	-185,000	-64,860.00	-121.00	-120,140.00	35.1%
41130 ANIMAL VACCINATION	-6,000	-6,000	-3,875.00	53.00	-2,125.00	64.6%
41140 CABLE TV FRANCHISE	-275,000	-275,000	-75,005.05	-13,034.45	-199,994.95	27.3%
41520 BUILDING PERMITS	-1,000,000	-1,000,000	-305,297.23	-39,953.60	-694,702.77	30.5%
41540 PLUMBING PERMITS	-20,000	-20,000	-12,250.00	-2,400.00	-7,750.00	61.3%
41590 OTHER PERMITS	-375,000	-375,000	-125,387.77	-43,155.00	-249,612.23	33.4%
42110 FINES	-14,000	-14,000	-3,325.00	-475.00	-10,675.00	23.8%
42120 OFFICERS COSTS	-22,000	-22,000	-4,636.03	-1,249.73	-17,363.97	21.1%
42141 DRUG COURT FEES	-1,600	-1,600	-133.00	.00	-1,467.00	8.3%
42142 VETERANS TREATMENT COURT FEES	-1,800	-1,800	-70.30	.00	-1,729.70	3.9%
42190 DATA ENTRY FEES -CIRCUIT COUR	-9,000	-9,000	-2,664.00	-805.00	-6,336.00	29.6%
42191 COURTROOM SECURITY - CIRCUIT	-7,500	-7,500	-1,584.87	-663.34	-5,915.13	21.1%
42192 CIRCUIT COURT VICTIMS ASSESS	-3,525	-3,525	-510.38	-139.65	-3,014.62	14.5%
42310 FINES	-135,000	-135,000	-32,917.74	-14,435.00	-102,082.26	24.4%
42311 FINES - LITTERING	-250	-250	-47.50	.00	-202.50	19.0%
42320 OFFICERS COSTS	-225,000	-225,000	-51,089.92	-18,364.80	-173,910.08	22.7%
42330 GAME & FISH FINES	-500	-500	-128.25	-22.50	-371.75	25.7%
42341 DRUG COURT FEES	-20,000	-20,000	-3,486.50	-972.81	-16,513.50	17.4%
42342 VETERANS TREATMENT COURT FEES	-14,250	-14,250	-2,370.65	-641.24	-11,879.35	16.6%
42350 JAIL FEES GENERAL SESSIONS	-200,000	-200,000	-68,950.46	-22,445.16	-131,049.54	34.5%
42380 DUI TREATMENT FINES	-20,000	-20,000	-4,417.26	-1,818.06	-15,582.74	22.1%
42390 DATA ENTRY FEE-GENERAL SESS	-63,000	-63,000	-11,614.85	-4,457.30	-51,385.15	18.4%
42392 GEN SESSIONS VICTIM ASSESSMNT	-50,000	-50,000	-10,862.15	-3,504.53	-39,137.85	21.7%
42410 FINES	-1,700	-1,700	-161.50	-71.25	-1,538.50	9.5%
42420 OFFICERS COSTS	-15,000	-15,000	-4,194.63	-1,523.80	-10,805.37	28.0%



11/03/2020 08:26
mlopez

MONTGOMERY COUNTY GOVERNMENT, TN
YEAR-TO-DATE BUDGET REPORT

P 2
glytdbud

FOR 2021 04

JOURNAL DETAIL 2021 1 TO 2021 12

	ORIGINAL ESTIM REV	REVISED EST REV	ACTUAL YTD REVENUE	ACTUAL MTD REVENUE	REMAINING REVENUE	PCT COLL
42450 JAIL FEES	-63,000	-63,000	-14,089.47	-4,384.25	-48,910.53	22.4%
42490 DATA ENTRY FEE-JUVENILE COURT	-10,250	-10,250	-2,075.00	-585.00	-8,175.00	20.2%
42520 OFFICERS COSTS	-35,000	-35,000	-11,802.90	-3,777.00	-23,197.10	33.7%
42530 DATA ENTRY FEE -CHANCERY COUR	-5,000	-5,000	-1,788.00	-580.00	-3,212.00	35.8%
42610 FINES	-1,000	-1,000	-3.80	.00	-996.20	.4%
42641 DRUG COURT FEES	-30,000	-30,000	-14,415.00	-3,780.00	-15,585.00	48.1%
42910 PROCEEDS -CONFISCATED PROPERT	-3,000	-50,365	-45,963.88	.00	-4,401.12	91.3%
42990 OTHER FINES/FORFEITS/PENALTIE	-18,300	-18,300	-12,427.00	-3,090.50	-5,873.00	67.9%
43120 PATIENT CHARGES	-6,900,000	-6,900,000	-1,941,349.97	-477,156.09	-4,958,650.03	28.1%
43140 ZONING STUDIES	-4,500	-4,500	-1,250.00	-250.00	-3,250.00	27.8%
43190 OTHER GENERAL SERVICE CHARGES	-55,000	-55,000	-20,629.00	-6,722.00	-34,371.00	37.5%
43340 RECREATION FEES	-17,000	-17,000	-12,349.17	-1,675.00	-4,650.83	72.6%
43350 COPY FEES	-10,000	-10,000	-3,681.90	-1,054.45	-6,318.10	36.8%
43365 ARCHIVE & RECORD MANAGEMENT	-475,500	-475,500	-132,896.31	-43,146.46	-342,603.69	27.9%
43366 GREENBELT LATE APPLICATION FE	0	0	-200.00	.00	200.00	100.0%
43370 TELEPHONE COMMISSIONS	-170,000	-170,000	-54,294.29	-15,400.75	-115,705.71	31.9%
43380 VENDING MACHINE COLLECTIONS	-85,000	-85,000	-30,558.79	-9,956.94	-54,441.21	36.0%
43392 DATA PROCESSING FEES -REGISTE	-80,000	-80,000	-30,702.00	-10,028.00	-49,298.00	38.4%
43393 PROBATION FEES	-27,000	-27,000	-5,355.00	-1,235.00	-21,645.00	19.8%
43394 DATA PROCESSING FEES - SHERIF	-30,000	-30,000	-5,864.77	-2,266.92	-24,135.23	19.5%
43395 SEXUAL OFFENDER FEE - SHERIFF	-18,000	-18,000	-4,200.00	-1,500.00	-13,800.00	23.3%
43396 DATA PROCESSING FEE-COUNTY CL	-30,000	-30,000	-6,927.00	-1,110.00	-23,073.00	23.1%
43990 OTHER CHARGES FOR SERVICES	-4,200	-4,200	-4,666.00	-252.00	466.00	111.1%
44110 INTEREST EARNED	-2,000,000	-2,000,000	-48,375.20	-24,678.94	-1,951,624.80	2.4%
44120 LEASE/RENTALS	-594,458	-594,458	-212,332.25	-48,697.33	-382,125.75	35.7%
44140 SALE OF MAPS	-3,000	-3,000	-1,500.00	.00	-1,500.00	50.0%
44170 MISCELLANEOUS REFUNDS	-341,804	-341,804	-73,150.73	-26,268.41	-268,653.27	21.4%
44530 SALE OF EQUIPMENT	-5,000	-5,000	-5,529.00	-4,699.00	529.00	110.6%
44990 OTHER LOCAL REVENUES	-481,355	-481,355	-157,105.79	-39,179.67	-324,249.21	32.6%
45510 COUNTY CLERK	-2,100,000	-2,100,000	-598,896.07	-156,600.04	-1,501,103.93	28.5%
45520 CIRCUIT COURT CLERK	-680,000	-680,000	-172,285.79	-50,082.85	-507,714.21	25.3%
45540 GENERAL SESSIONS COURT CLERK	-1,700,000	-1,700,000	-372,491.47	-126,029.68	-1,327,508.53	21.9%
45550 CLERK & MASTER	-425,000	-425,000	-128,126.91	-40,198.26	-296,873.09	30.1%
45560 JUVENILE COURT CLERK	-200,000	-200,000	-58,030.20	-16,211.42	-141,969.80	29.0%
45580 REGISTER	-1,000,000	-1,000,000	-578,701.46	-186,548.56	-421,298.54	57.9%
45590 SHERIFF	-70,000	-70,000	-20,771.97	-11,261.31	-49,228.03	29.7%
45610 TRUSTEE	-3,500,000	-3,500,000	-385,086.58	-121,744.16	-3,114,913.42	11.0%
46110 JUVENILE SERVICES PROGRAM	-580,011	-580,011	-25,384.71	-7,659.08	-554,626.29	4.4%
46210 LAW ENFORCEMENT TRAINING PROG	-65,400	-65,400	.00	.00	-65,400.00	.0%
46290 OTHER PUB SAFETY GRANT	0	-446,772	-446,772.00	-446,772.00	.00	100.0%
46390 OTHER HEALTH & WELFARE GRANT	-130,000	-130,000	.00	.00	-130,000.00	.0%
46430 LITTER PROGRAM	0	0	-14,001.50	-14,001.50	14,001.50	100.0%
46810 FLOOD CONTROL	-500	-500	.00	.00	-500.00	.0%
46830 BEER TAX	-17,500	-17,500	-9,568.81	-9,568.81	-7,931.19	54.7%



11/03/2020 08:26
mlopez

MONTGOMERY COUNTY GOVERNMENT, TN
YEAR-TO-DATE BUDGET REPORT

P 3
glytdbud

FOR 2021 04

JOURNAL DETAIL 2021 1 TO 2021 12

	ORIGINAL ESTIM REV	REVISED EST REV	ACTUAL YTD REVENUE	ACTUAL MTD REVENUE	REMAINING REVENUE	PCT COLL
46835 VEHICLE CERTIFICATE OF TITLE	-27,000	-27,000	-7,814.65	.00	-19,185.35	28.9%
46840 ALCOHOLIC BEVERAGE TAX	-250,000	-250,000	-81,699.82	.00	-168,300.18	32.7%
46851 STATE REVENUE SHARING - T.V.A	-1,828,069	-1,828,069	.00	.00	-1,828,069.00	.0%
46852 REVENUE SHARING - TELECOM	-200,000	-200,000	-85,394.61	-25,958.42	-114,605.39	42.7%
46890 PRISONER TRANSPORTATION	-15,000	-15,000	1,622.03	-205.22	-16,622.03	-10.8%
46915 CONTRACTED PRISONER BOARDING	-1,275,000	-1,275,000	-225,069.00	-663.00	-1,049,931.00	17.7%
46960 REGISTRAR'S SALARY SUPPLEMENT	-15,164	-15,164	-3,791.00	.00	-11,373.00	25.0%
46980 OTHER STATE GRANTS	-3,831,004	-3,831,004	-247,303.60	.00	-3,583,700.40	6.5%
46990 OTHER STATE REVENUES	-35,000	-35,000	-9,906.88	-2,862.95	-25,093.12	28.3%
47235 HOMELAND SECURITY GRANTS	-74,350	-275,812	.00	.00	-275,812.00	.0%
47590 OTHER FEDERAL THROUGH STATE	-54,638	-387,600	-4,186.13	-3,085.40	-383,413.87	1.1%
47700 ASSET FORFEITURE FUNDS	-402,000	-402,000	.00	.00	-402,000.00	.0%
47990 OTHER DIRECT FEDERAL REVENUE	-2,000	-3,091,250	-600.00	.00	-3,090,650.00	.0%
48110 PRISONER BOARD	0	0	-52.33	.00	52.33	100.0%
48130 CONTRIBUTIONS	-262,973	-262,973	-33,174.00	-12,130.75	-229,799.00	12.6%
48140 CONTRACTED SERVICES	-264,000	-264,000	-65,915.13	-21,219.22	-198,084.87	25.0%
48610 DONATIONS	-4,110	-4,110	-233.32	-31.72	-3,876.68	5.7%
49700 INSURANCE RECOVERY	0	-38,020	-2,900.00	-1,100.00	-35,120.00	7.6%
49800 OPERATING TRANSFERS	-130,534	-201,630	.00	.00	-201,630.00	.0%
TOTAL COUNTY GENERAL	-99,849,573	-104,076,500	-8,799,485.29	-2,300,265.92	-95,277,014.71	8.5%
131 GENERAL ROADS						
40110 CURRENT PROPERTY TAX	-5,181,000	-5,181,000	.00	.00	-5,181,000.00	.0%
40120 TRUSTEE'S COLLECTIONS - PYR	-108,000	-108,000	-37,360.64	.00	-70,639.36	34.6%
40125 TRUSTEE COLLECTIONS - BANKRUP	-4,000	-4,000	-571.09	.00	-3,428.91	14.3%
40130 CIRCUIT/CHANCERY COLLECT-PYR	-50,000	-50,000	.00	.00	-50,000.00	.0%
40140 INTEREST & PENALTY	-41,325	-41,325	-4,345.69	.00	-36,979.31	10.5%
40270 BUSINESS TAX	-120,000	-120,000	-17,591.89	-4,434.86	-102,408.11	14.7%
40280 MINERAL SEVERANCE TAX	-234,110	-234,110	-87,206.88	-87,206.88	-146,903.12	37.3%
40320 BANK EXCISE TAX	-20,000	-20,000	.00	.00	-20,000.00	.0%
44170 MISCELLANEOUS REFUNDS	-25,000	-25,000	-7,197.10	-1,037.70	-17,802.90	28.8%
46410 BRIDGE PROGRAM	-350,000	-350,000	.00	.00	-350,000.00	.0%
46420 STATE AID PROGRAM	-500,000	-500,000	-426,459.92	-426,459.92	-73,540.08	85.3%
46920 GASOLINE & MOTOR FUEL TAX	-2,880,000	-2,880,000	-1,036,724.52	-343,667.75	-1,843,275.48	36.0%
46930 PETROLEUM SPECIAL TAX	-100,000	-100,000	-31,086.23	-10,362.04	-68,913.77	31.1%
48120 PAVING & MAINTENANCE	-20,000	-20,000	.00	.00	-20,000.00	.0%
49700 INSURANCE RECOVERY	-12,000	-12,000	.00	.00	-12,000.00	.0%
TOTAL GENERAL ROADS	-9,645,435	-9,645,435	-1,648,543.96	-873,169.15	-7,996,891.04	17.1%
151 DEBT SERVICE						

FOR 2021 04

JOURNAL DETAIL 2021 1 TO 2021 12

	ORIGINAL ESTIM REV	REVISED EST REV	ACTUAL YTD REVENUE	ACTUAL MTD REVENUE	REMAINING REVENUE	PCT COLL
40110 CURRENT PROPERTY TAX	-39,564,000	-39,564,000	.00	.00	-39,564,000.00	.0%
40120 TRUSTEE'S COLLECTIONS - PYR	-650,000	-650,000	-285,299.71	.00	-364,700.29	43.9%
40125 TRUSTEE COLLECTIONS - BANKRUP	-20,000	-20,000	-4,361.29	.00	-15,638.71	21.8%
40130 CIRCUIT/CHANCERY COLLECT-PYR	-390,000	-390,000	.00	.00	-390,000.00	.0%
40140 INTEREST & PENALTY	-250,000	-250,000	-33,255.15	.00	-216,744.85	13.3%
40210 LOCAL OPTION SALES TAX	-150,000	-150,000	-87,054.28	-25,964.60	-62,945.72	58.0%
40250 LITIGATION TAX - GENERAL	-350,000	-350,000	-78,424.85	-29,767.17	-271,575.15	22.4%
40266 LITIGATION TAX-JAIL/WH/CH	-400,000	-400,000	-88,805.51	-33,225.80	-311,194.49	22.2%
40270 BUSINESS TAX	-120,000	-120,000	-17,591.89	-4,434.86	-102,408.11	14.7%
40285 ADEQUATE FACILITIES TAX	-1,300,000	-1,300,000	-840,000.00	-173,000.00	-460,000.00	64.6%
40320 BANK EXCISE TAX	-175,000	-175,000	.00	.00	-175,000.00	.0%
44110 INTEREST EARNED	-1,000,000	-1,000,000	-161,052.01	-17,164.03	-838,947.99	16.1%
44990 OTHER LOCAL REVENUES	-508,812	-508,812	.00	.00	-508,812.00	.0%
47715 TAX CREDIT BOND REBATE	-90,000	-90,000	.00	.00	-90,000.00	.0%
49800 OPERATING TRANSFERS	0	0	-13,625.00	-13,625.00	13,625.00	100.0%
TOTAL DEBT SERVICE	-44,967,812	-44,967,812	-1,609,469.69	-297,181.46	-43,358,342.31	3.6%
171 CAPITAL PROJECTS						
40110 CURRENT PROPERTY TAX	-5,416,500	-5,416,500	.00	.00	-5,416,500.00	.0%
40120 TRUSTEE'S COLLECTIONS - PYR	-47,000	-47,000	-87,306.80	.00	40,306.80	185.8%
40125 TRUSTEE COLLECTIONS - BANKRUP	-2,000	-2,000	-1,628.32	.00	-371.68	81.4%
40130 CIRCUIT/CHANCERY COLLECT-PYR	-27,000	-27,000	.00	.00	-27,000.00	.0%
40140 INTEREST & PENALTY	-20,000	-20,000	-12,220.35	.00	-7,779.65	61.1%
40220 HOTEL/MOTEL TAX	-1,200,000	-1,200,000	-381,120.11	.00	-818,879.89	31.8%
40240 WHEEL TAX	-2,400,000	-2,400,000	-840,070.31	-255,199.50	-1,559,929.69	35.0%
40320 BANK EXCISE TAX	-50,000	-50,000	.00	.00	-50,000.00	.0%
44110 INTEREST EARNED	-60,000	-60,000	-245.49	-49.58	-59,754.51	.4%
46990 OTHER STATE REVENUES	-2,097,099	-2,629,789	-2,629,789.00	.00	.00	100.0%
47590 OTHER FEDERAL THROUGH STATE	0	0	-7,718.94	.00	7,718.94	100.0%
48610 DONATIONS	0	0	-200.00	-150.00	200.00	100.0%
49100 BOND PROCEEDS	0	-105,000,000	.00	.00	-105,000,000.00	.0%
TOTAL CAPITAL PROJECTS	-11,319,599	-116,852,289	-3,960,299.32	-255,399.08	-112,891,989.68	3.4%
GRAND TOTAL	-165,782,419	-275,542,036	-16,017,798.26	-3,726,015.61	-259,524,237.74	5.8%

** END OF REPORT - Generated by Mariel Lopez-Gonzalez **

Montgomery County, Tennessee
Office of Trustee
Monthly Financial Report
For the Month Ending 10/31/2020

ASSET		Beginning Balance	Debits	Credits	Ending Balance
999-11120	CASH ON HAND	1,300.00	15,519,253.64	15,519,253.64	1,300.00
999-11130-003	F & M BANK-TAX PAYMENTS	13,282,811.19	133,443.40	300.60	13,415,953.99
999-11130-006	PLANTERS BANK-MMA(TAX ACCOUNT)	837.43	315.40	0.00	1,152.83
999-11130-008	CUMBERLAND BK - TAX ACCOUNT	673,249.35	144.79	0.00	673,394.14
999-11130-022	PLANTERS BANK-OTHER CNTY GOVT CC	605,068.28	63,655.87	32,859.14	635,865.01
999-11130-025	LEGENDS BANK - BI-COUNTY FEES	10,000.00	127,665.92	127,665.92	10,000.00
999-11130-026	PLANTERS BANK -209	48,190.14	2,484.53	129.40	50,545.27
999-11130-027	REGIONS - OPERATING	60,712,059.21	75,432,849.25	87,897,848.37	48,247,050.09
999-11130-028	REGIONS - MCG CLEARING	49.53	43,812.78	43,766.78	95.53
999-11130-029	REGIONS - SCHOOL CLEARING	0.00	15,627,755.92	15,627,755.92	0.00
999-11130-030	CMCSS CREDIT CARD ACCT	1,040,236.98	7,921.14	635.19	1,047,522.93
999-11130-031	REGIONS - MCG CLEARING (NEW)	0.00	8,258,561.54	8,258,561.54	0.00
999-11130-032	F & M DISBURSEMENTS	0.00	0.00	0.00	0.00
999-11300-004	LEGENDS BANK - 207	9,410,067.19	129,979.58	812.68	9,539,234.09
999-11300-006	PLANTERS BANK-DEPOSIT ACCT	21,869.31	0.00	315.16	21,554.15
999-11300-011	SYNOVUS - SHARED CD - 101	15,104,576.82	128.27	0.00	15,104,704.89
999-11300-019	LOCAL GOVT INVESTMENT POOL 101	49,268.72	10.12	0.00	49,276.84
999-11300-026	BANK OF NASHVILLE / SYNOVUS	7,644,842.63	4,359.90	8,737.50	7,640,461.03
999-11300-028	REGIONS - CAPITAL PROJECTS	12,788,250.13	78.58	0.00	12,788,328.71
999-11300-029	REGIONS - GO PUBLIC IMPROVEMENT	2,763,097.54	16.98	0.00	2,763,114.52
999-11300-030	REGIONS - WORKER'S COMP	880,823.71	5.41	0.00	880,829.12
999-11300-035	REGIONS - E911	451,500.96	2.77	0.00	451,503.73
999-11300-037	REGIONS - DEBT SERVICE	226,344.46	1.39	0.00	226,345.85
999-11300-038	REGIONS - UNEMPLOYMENT TRUST	121,411.39	0.75	0.00	121,412.14
999-11300-040	HILLIARD LYONS	9,348,748.32	24,468.75	26,517.36	9,346,699.71
999-11300-041	2016A G.O. PUBLIC IMPROVEMENT BOND	19,314,208.84	17,049.81	0.00	19,331,258.65
999-11300-042	SHERIFF FEDERAL TREASURY	0.00	0.00	0.00	0.00
999-11300-043	SHERIFF FEDERAL JUSTICE	70,781.32	0.43	0.00	70,781.75
999-11300-044	FIRST ADVANTAGE CD	3,075,766.50	0.00	0.00	3,075,766.50
999-11300-046	USBANK - ICS	15,709,323.85	129.00	0.00	15,709,452.85
999-11300-047	REGIONS - GO CAPITAL OUTLAY	2,915,077.84	17.91	0.00	2,915,095.75
999-11300-048	REGIONS - GO BOND ANTICIPATION	2,390,688.65	14.69	0.00	2,390,703.34
999-11300-049	F & M - TAX DEPOSITS	893,246.94	1,645,528.62	106,004.91	2,432,770.65
999-11300-050	REGIONS - MPEC CONSTRUCTION	0.00	114,500,000.00	0.00	114,500,000.00
999-11300-051	REGIONS -MPEC CAPITALIZED INTEREST	0.00	6,604,124.14	0.00	6,604,124.14
999-11405	CHECKS WITH INSUFFICIENT FUNDS	0.00	0.00	0.00	0.00
999-11410	STATE OF TN TAX RELIEF CURR YR	0.00	2,373.00	972.00	1,401.00
999-11515	COUNTY TAX RELIEF	0.00	140.00	140.00	0.00
999-11890-CLEARING	MORTGAGE CLEARING	0.00			0.00
999-21900	TELLER OVER/SHORT	0.00	20.10	20.10	0.00
		179,553,697.03	238,146,310.38	127,652,296.21	290,047,711.20

LIABILITY		Beginning	Debits	Credits	Ending
101-21353	PLANNING COMMISSION	0.00			0.00
101-21560	DUE TO LITIGANTS HEIRS AND OTHERS	0.00			0.00
999-20040	EXCESS LAND SALE PAYMENTS 2004	25,830.63	0.00	0.00	25,830.63
999-20120	EXCESS LAND SALE PAYMENTS 2012	4,739.39	0.00	0.00	4,739.39
999-20130	EXCESS LAND SALE PAYMENTS 2013	53,146.79	0.00	0.00	53,146.79
999-20140	EXCESS LAND SALE PAYMENTS 2014	46,401.47	0.00	0.00	46,401.47
999-21900	TELLER OVER/SHORT	0.00	20.10	20.10	0.00
999-22200	OVERPAYMENTS	6,103.31	662.05	5,728.11	11,168.76
999-22200-001	PAYMENT OVERAGES	20.60	0.00	11.06	31.66
999-24105	CREDIT CARD FEES	0.00			0.00
999-26500	STOP PAYMENTS	0.00			0.00
999-27700	TRUSTEE'S HOLDING ACCOUNT	0.00			0.00
999-28310	UNDISTRIBUTED TAXES	0.00	6,200.64	6,200.64	0.00
999-28311	UNDISTRIBUTED TAXES PAID IN ADVANCE	40,096.06	58,694.98	18,598.90	0.00
999-29900	FEE/COMMISSION ACCOUNT	122,244.16	121,968.94	127,607.51	127,882.73
101	COUNTY GENERAL FUND	14,186,257.48	7,077,102.19	3,030,844.67	10,139,999.95
122	DRUG CONTROL FUND	64,782.26	134.09	8,126.87	72,775.04
131	GENERAL ROAD FUND	6,731,858.70	569,718.12	929,517.48	7,091,658.06
141	GENERAL PURPOSE SCHOOL FUND	42,370,528.68	25,732,219.37	25,832,674.72	42,470,984.23
142	SCHOOL FEDERAL PROJECTS FUND	7,213,771.37	6,733,869.46	1,289,864.55	1,769,766.46
143	CHILD NUTRITION FUND	4,745,776.24	1,256,595.70	3,281.76	3,492,462.30
144	SCHOOL SYSTEM TRANS FUND	3,642,910.57	1,378,191.11	1,364,521.56	3,631,241.02
146	EXTENDED SCHOOL PROGRAM FUND	188,484.46	68.36	214.18	188,630.28
151	DEBT SERVICE FUND	30,833,896.20	183,586.49	121,779,340.25	152,429,639.95
171	CAPITAL PROJECTS FUND	38,622,397.60	5,183,504.40	449,147.18	33,788,040.58
177	EDU CAPITAL PROJECTS FUND	732,927.50	833,352.91	2,903,503.00	2,803,077.59
204	E911 COMMUNICATION DIST	0.00	0.00	0.00	0.00
207	BI-COUNTY LANDFILL	7,731,422.97	1,041,158.07	1,141,741.40	7,832,006.30
208	EMERGENCY COMMUNICATIONS DISTRICT	1,482,710.30	224,924.52	414,124.30	1,671,910.08
209	LIBRARY FUND	438,047.93	177,867.08	7,197.12	267,377.97
263	SELF INSURANCE TRUST FUND	18,347,879.65	5,043,990.65	6,894,376.70	20,198,265.70
266	WORKERS' COMPENSATION	1,341,171.83	50,459.71	0.00	1,290,712.12
267	UNEMPLOYMENT COMPENSATION	76,440.91	40,032.07	1,866.00	38,274.84
351	CITY OF CLARKSVILLE - SALES TAX	0.00	1,694,174.66	1,694,174.66	0.00
362	MGC RAIL AUTHORITY	34,412.70	249.85	3.10	34,165.95
363	JUDICIAL DISTRICT DRUG FUND	417,347.37	7,563.22	7,312.77	417,098.92
364	DISTRICT ATTORNEY FUND	102,089.50	2,283.33	608.24	100,414.41
365	PORT AUTHORITY	50,000.00	0.00	0.00	50,000.00
366	VICTIMS ASSESSMENT FUND	0.00			0.00
		179,553,697.03	57,416,592.66	167,910,606.83	290,047,711.20

This report is submitted in accordance with requirements of section 5-8-505,
and/or 67-5-1802, Tennessee Code Annotated, and to the best of my knowledge,
information and belief accurately reflects transactions of this office for the year ended June 30, 2021

Kimberly Blinn
Signature

11/6/2020
Date

Montgomery County Trustee
Title

**MONTGOMERY COUNTY TRUSTEE'S OFFICE
INVESTMENTS - SEPTEMBER 2020 INTEREST REPORT**

FUND NAME	FUND CODE	ACCOUNT NUMBER	BANK NAME	INVESTMENT	INTEREST	TOTAL INVESTED	APY%	Previous Rate	Maturity Rate	INVESTMENT INFORMATION
COUNTY GENERAL FUND	101	11130-003	F&M BANK/TAX RECEIPTS	13,282,011.19	3,799.04	13,286,610.83	0.35	0.75		
COUNTY GENERAL FUND	101	11130-005	PLANTERS BANK/TAX RECEIPTS	837.43	0.24	837.67	0.25			
COUNTY GENERAL FUND	101	11130-008	CUMB BK & TRUST/TAX RECEIPTS	873,249.35	144.79	873,344.14	0.30			
ANIMAL CONTROL/FEES	101	11130-022	PLANTERS BANK-OTHER CNTY GOVT CREDIT CARD ACCT	605,068.23	0.05	605,068.33	0.00			
CLARKSVILLE MO CO PUBLIC LIBRARY	200	11130-026	PLANTERS BANK - LIBRARY	48,100.14	-	48,100.14	0.00			
COUNTY GENERAL FUND	101	11130-027	REGIONS-OPERATING	53,357,145.42	236.55	53,357,381.97	0.10			
CMCSS GENERAL FUND	141	11130-030	PLANTERS BANK-CMCSS CREDIT CARD	1,040,230.86	0.08	1,040,237.06	0.00			
BI-COUNTY LANDFILL	707	11300-004	LEGENDS BANK Business Reserve Money Market	9,410,067.19	3,846.68	9,413,913.87	0.50			
COUNTY OPERATING ACCOUNT	ALL	11300-006	PLANTERS BANK - TAX	21,669.31	-	21,669.31	0.00			
COUNTY GENERAL FUND	101	11300-011	STEPHENS INC.	15,104,576.82	128.27	15,104,704.89	2.80		variable	
COUNTY GENERAL FUND	101	11300-019	LGP	49,268.72	10.12	49,278.84	0.25	0.27		
COUNTY GENERAL FUND	101	11300-026	BANK OF NASHVILLE/SYNOVUS	7,644,842.63	4,355.00	7,649,198.53	1.85			
DEBT SERVICE FUND	151	11300-028	REGIONS BANK - CAPITAL PROJECTS	12,010,163.79	49.54	12,010,210.73	0.10			
CAPITAL PROJECTS	171	11300-028	REGIONS BANK - CAPITAL PROJECTS	778,035.40	-	778,039.40	0.10			
CAPITAL PROJECTS	171	11300-029	REGIONS BANK - GO PUBLIC IMPROVEMENT	2,783,097.40	10.14	2,783,097.84	0.10			
WORKMAN'S COMPENSATION	101	11300-030	REGIONS BANK - WORKER'S COMP	880,820.48	3.73	880,823.71	0.10			
E-911	204	11300-035	REGIONS BANK - E911	451,499.30	1.66	451,500.96	0.10			
DEBT SERVICE FUND	151	11300-037	REGIONS BANK - DEBT SERVICE	226,343.63	0.83	226,344.46	0.10			
UNEMPLOYMENT TRUST FUND	101	11300-038	REGIONS BANK - UNEMPLOYMENT TRUST	121,410.94	0.45	121,411.39	0.10			
COUNTY GENERAL FUND	101	11300-043	HILLIARD LYONS	9,349,748.32	24,468.75	9,373,217.07	2.49	2.20		
2018A G O PUBLIC IMP BOND	151	11300-041	FRANKLIN SYNERGY	19,314,209.84	17,049.81	19,331,258.65	0.64	2.22		
SHERIFF FEDERAL TREASURY	101	11300-042	REGIONS BANK - SHERIFF FEDERAL TREASURY	-	-	-	0.10			
SHERIFF FEDERAL JUSTICE	101	11300-043	REGIONS BANK - SHERIFF FEDERAL JUSTICE	70,781.06	0.26	70,781.32	0.10			
COUNTY GENERAL FUND	101	11300-044	FIRST ADVANTAGE CD	3,075,766.50	-	3,075,766.50	0.65			
COUNTY GENERAL FUND	101	11300-045	USBANK - ICS	15,709,323.85	129.00	15,709,452.85	0.01	0.10		
CAPITAL PROJECTS	171	11300-047	REGIONS BANK - G O CAPITAL OUTLAY	2,915,067.14	10.70	2,915,077.84	0.10			
CAPITAL PROJECTS	171	11300-048	REGIONS BANK - G O BOND ANTICIPATION	2,320,679.87	8.78	2,320,688.85	0.10			
TAX ACCOUNT	ALL	11300-042	F & M BANK - TAX	893,245.64	31.89	893,278.83	0.10			Opened 8/2020
TOTALS				\$ 172,187,350.72	\$ 54,284.76	\$ 172,241,635.48				
Kimberly B. Wiggins, MBA Montgomery County Trustee 10/30/2020										